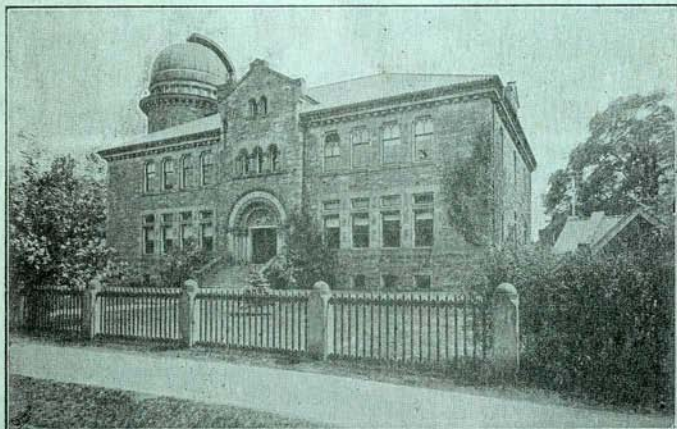


EXCHANGE
AUG 27 1925

DEPARTMENT OF MARINE AND FISHERIES
DOMINION OF CANADA.



TORONTO OBSERVATORY



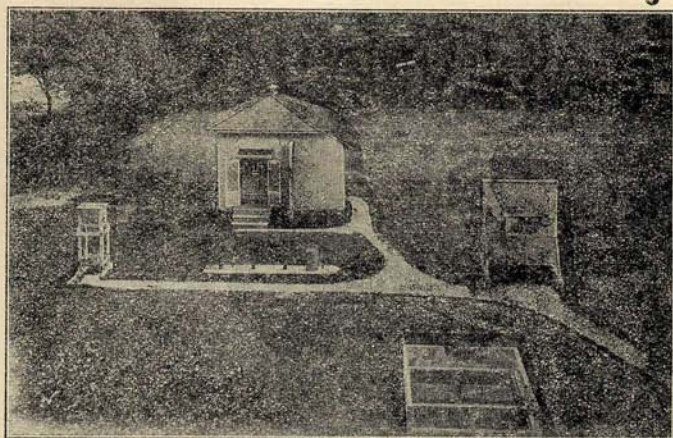
**Results of Meteorological, Magnetical
and Seismological Observations,
1923.**

Published under the direction of
Sir Frederic Stupart, F.R.S.C.,
Director of the Meteorological Service, Toronto.

PRINTED BY THE OBSERVATORY PRESS,
TORONTO, 1925.

DEPARTMENT OF MARINE AND FISHERIES
DOMINION OF CANADA.

TORONTO OBSERVATORY



**Results of Meteorological, Magnetical
and Seismological Observations,
1923.**

Published under the direction of
Sir Frederic Stupart, F.R.S.C.,
Director of the Meteorological Service, Toronto.

PRINTED BY THE OBSERVATORY PRESS,
TORONTO, 1925.

CONTENTS.

—o—

| | |
|--|----|
| Notes..... | IV |
| Monthly Weather Synopsis..... | V |
| Monthly Meteorological Tables | 1 |
| Yearly Meteorological Summary | 25 |
| Wind Summary | 26 |
| Harbor Notes..... | 26 |
| Absolute Extremes, during 81 years | 27 |
| Periodic Events..... | 28 |
| Sunshine—Total Amount..... | 29 |
| “ Monthly Tables | 31 |
| “ Summary | 32 |
| Seismograph Records..... | 33 |
| Magnetic Summary..... | 45 |
| Phenological Summary..... | 46 |

TORONTO OBSERVATORY.

Lat. 43° 40' 0".8 N. Long. 5h. 17m. 35.6s. W. The observations are taken at 75th meridian time. Height of barometer cistern 379 feet above sea level. Height at the old Observatory 350 feet.

BAROMETER—Readings given, are taken from the photographic barograph, and are the means of the 24-hour readings of each day. A correction has been employed to reduce these readings to the original height of the standard barometer in the old Observatory building, so as to make them comparable with previous Toronto registers. Capillarity and gravity corrections have been omitted.

TEMPERATURE - Adopted means are taken from the max. and min. of the thermometers in the Stevenson Screen. Extremes are also from the same screen. The 24-hour means are taken from the photographic thermograph, where the tubes are four feet above the ground.

On August 31st, 1922, after 8 p.m., the thermometers were removed from the old Stevenson shed and placed in a similar shed on the lower lawn some 70 feet further from the stone building and subsequent readings are from this shed.

HUMIDITY. - Means are taken from a Julien Friez Hygrometer and are from the 24-hour readings.

WIND—Direction and velocity are from the anemometer at the Eastern Gap on the Island, where the cups revolve at a height of 50 feet above the lake level.

GALE—A velocity of 32 miles and over.

CLEAR DAY—When the mean from six observations is below 0.2.

CLOUDY DAY—When the mean from six observations is above 0.8.

AURORA—Observations have been rendered doubtful owing to the large number of electric lights in the city.

Weather Synopsis for 1923.

JANUARY. Daily mean temperatures were very irregular, cold and warm waves following one another rapidly. The mean daily temperature on the 17th was 20° below normal but on the next day 13.4° above. Maximums of 42° and 43° were recorded on the 1st and 18th and 38° or over on the 19th, 20th and 21st. Minimums of -1° and -2° were noted on the 6th and 7th and -12° on the 17th.

Rainfall was light and 19 days of snow gave a total of 11 inches above normal. The heaviest fall was 7½ inches on the 11th with an easterly gale of 46 miles. Winds were strong and gales were recorded on 9 days chiefly from the East and Northwest. There were many cloudy days and bright sunshine was 8% below the usual amount. Twelve inches of snow remained on the ground at the end of the month.

FEBRUARY. The monthly mean was 3.7° below the normal. The first two days were mild, then, except on the 8th, mean daily temperatures were well below normal, the greatest departures being 17° on the 4th, 13° on the 5th and 6th, 17° on the 17th and 19° on the 23rd. It was milder during the last four days of the month, temperature rising to 43° on the 26th. Minimums of -5.4°, zero, -3° were noted on the 4th, 23rd and 24th.

Light rainfall fell on only one day, and snowfall showed a deficiency of six inches. The heaviest fall was 3.8 inches on the 12th, the barometer falling rapidly at 20h, 15m followed by a 48 mile S.E. wind. The winds as in January were strong throughout and gales occurred on four days, with a maximum velocity of 55 miles west on the 14th. Bright sunshine was 12 hours below the normal. Snow on the ground at the end of the month, 9 inches.

VI.

MARCH. The first four days were mild, followed by alternate cold and warm waves to the 23rd. Maximums of 50° and over were recorded on the 3rd, 16th, 21st and 23rd, and minimums of 8° on the 19th and 20th. The last eight days of the month were very cold, in fact for the time of the year it was the coldest period ever recorded here. Daily means on the 26th, 28th, 29th and 31st were respectively, 17° , 25° , 18° and 25.2° below normals, with absolute minimums of 4° and 3° on the 26th and 31st. This steady cold was accompanied by N.W. gales on the 27th, 28th and 31st. Rainfall was slightly below the usual and snowfall 9 inches above. The heaviest falls were on the 6th and 25th with 5.6 and 4.5 inches, attended by E. and N.E. gales. Eleven gales were recorded, maximum velocity on the 16th of 54 miles West. Total wind mileage was 1,755 miles greater than March, 1922. Bright sunshine about normal. Depth of snow on the ground at the end of the month was about six inches.

APRIL. Temperature rose rapidly on the 1st and daily means were generally above normal to the 6th. A period of cold, unseasonable weather then set in extending to the 18th with many strong easterly and N.W. winds and much cloud during the day hours. More seasonable weather followed from the 19th to 29th but the 30th was colder. The monthly mean was 1.3° above normal. Maximums of 81° and 78° were recorded on the 20th and 21st, but on the morning of the 12th the temperature fell to 22° . Rainfall which varied little from normal was fairly well distributed, 1.06 inch fell on the 5th. Snow was measurable on 4 days with 1.4 inches on the 15th. Maximum wind velocity was 44 miles west on the 8th and gales from N.E. and E. were recorded on the 13th, 14th and 15th. Bright sunshine was about normal.

MAY. Monthly mean was slightly below normal. Temperatures during the first week were well above, but from the 8th to the morning of the 24th, cold, raw, unseasonable weather prevailed with many strong N.E., E. and N.W. winds, and vegetation made but little progress. On the 9th and 10th daily means were 13° and 17° below normals, the minimum on the latter morning falling to 27° . On the morning of the 18th the terrestrial thermometer fell to 28° . During the afternoon of the 24th temperature rose to 69° and then to the end of the month, day

VII.

readings were generally above 70° and the nights cold. Maximums of 79° and 83° were recorded on the 25th and 26th. Bright sunshine was 15% above normal. Rain fell every few days from the 8th to the 20th, with the greatest on the 15th and 20th measuring 1.44 and 0.79 inches. The monthly total was somewhat in excess of normal. 1.3 inches of snow fell on the 9th and a slight fall was recorded next day. The first thunderstorm of the season occurred on the morning of the 20th.

JUNE. The monthly mean was 4.2° above normal. Excepting the 8th the first 11 days were quite warm, then from the 12th to the 16th, nights and early mornings were decidedly cool with E. and N. winds, followed by a very warm period extending to the 26th, after which it became decidedly cool and unseasonable to the end of the month with strong N. and N.W. winds. From the 18th to the 25th maximum readings were generally above 85° and on four days 90° was exceeded, with 95.6° on the 24th. High vapour tension readings made the heat physically trying but a heavy thunderstorm, which did much damage on the city waterfront on the evening of the 25th, brought relief, the temperature falling from 90° to 70° in two hours, with rapid barometric changes, notably a rise of 0.08 inch in 8 minutes followed by a sharper rise of a similar amount in a few minutes between 17.50 and 18.10 hours. This storm was accompanied by two wind squalls from the N.W. with an average velocity of 75 miles per hour, the winds continuing for some time. Rainfall was 1.48 inches above the usual, a great portion falling during 8 thunderstorms. With the exception of one day none fell between the 9th and 22nd. Heaviest falls were on the 3rd and 25th with 1.20 and 0.76 inches, the latter falling in about 55 minutes.

JULY. Mean daily temperature during the first half of the month varied little from normal, the nights generally being cool. The warmest period was from the 17th to the 21st, with maximums on the 19th, 20th and 21st of 90° , 92° and 89° . On the 21st the minimum never fell below 72° . From the 23rd to the 29th the weather was generally quite cool, temperature falling to 51° on the morning of the 26th, the daily range being 30.4° . The last two days of the month were much warmer, although the minimum on the morning of the 30th fell to 55° . The monthly mean was 1.1° above normal. There were only 9 completely clouded days and bright sunshine was 6% above normal. A

VII.

marked deficiency in the rainfall amounted to 1.32 inches. The largest portion of the monthly total fell during six thunderstorms. Prevailing winds were N.E. and East.

AUGUST. The weather was quite warm up to the 12th with the exception of the 8th and 9th. 90° was recorded on the 7th and 86° was noted on four days. Cool and unseasonable from the 13th to the 29th, but decidedly so from the 21st to the 27th. Minimums of 45° were frequently recorded and 42° was recorded on the 23rd. Fresh north and northwest winds generally prevailed during this latter period with good percentage of clear weather. The 30th and 31st were much warmer. Vapour tension was generally high during the early part of the month, but notably so on the morning and afternoon of the 12th. Relative humidity was 7% below the normal, and bright sunshine 6% above. Rainfall was fairly well distributed, the total being 0.8 inch above normal. A heavy fall of 0.73 inch between 20h, 40m and 24hrs. of the 7th occurred with a strong northerly wind, 0.9 and 0.57 inch fell on the 18th and 21st. Six thunderstorms contributed considerably to the total and hail fell during that on the afternoon of the 24th.

SEPTEMBER. From the 9th to 20th, mean daily temperatures were considerably below the normals, otherwise except on the last day of the month, the weather was quite warm, the monthly mean being 1.9° above normal. Maximum readings were observed, of 85° on the 1st and 82° on the 27th; minimums fell to 37° on the 14th and 38° on the 17th. Bright sunshine was deficient 4% and rainfall was likewise well below normal by half an inch. Rain fell from the 7th to the 13th every day except one. The heaviest fall was 0.52 inch on the 28th. No gales were recorded, prevailing wind direction was N.E.

OCTOBER. Generally fine and pleasant with mean temperature of 2.2° above normal. Daily means to the 9th, excepting the 3rd, averaged 5° below normal, then followed much warmer weather to the 29th (excepting the 21st and 22nd). The maximum was 69° on the 13th and the daily mean temperatures on the 17th, 18th and 19th were about 10° above the normals with maximums of 65°, 62° and 63° respectively. Minimums fell to 32° on the 6th and 22nd. The 30th and 31st were quite cool, minimum on the latter day falling to 31.8°. Relative humidity was 6% below normal and an unusual, low reading of 27 was noted on the after-

IX.

noon of the 23rd rising to 94 by 9 a.m. next morning. Barometric changes were unusually rapid from 5h to 13:50 of the 24th, some of the surges being the largest we have recorded. Bright sunshine was 6% above normal, the rainfall was considerably below, and there were comparatively few rainy days. Winds generally light, with prevailing direction from the West.

NOVEMBER. Remarkably fine and very mild, there being only eight days on which the mean daily temperature was below normal. The largest departure was 8.4° on the 1st. There were many spring-like days. Maximum readings of 58° and 56° were recorded on the 10th and 21st. Not until the 19th when the minimum temperature fell to 22° did the first cold weather occur. Only one gale was recorded and the rainfall was only 0.6 inch above average. The heaviest fall 1.35 inches occurred on the 29th and 30th, and no rain fell from the 7th to the 15th. Snowfall was light with the heaviest fall on the 23rd of 1.8 inches.

DECEMBER. The warmest on record, with a mean temperature of 9.9° above normal. On only one day, the 30th, did the mean temperature fall slightly below normal. Temperatures of 45° and over were recorded on eight days, and maximum readings were noted of 50° on the 9th and 19th, and 53° on the 12th. The minimum for the month was 18.4° on the 24th. Grass on the 22nd was as green as in May. Bright sunshine was 5% above the normal. There were many clear, pleasant days. 7 gales were recorded, the maximum velocity being 45 miles from the West on the 28th. Heaviest rains occurred on the 6th and 13th with 0.92 and 0.56 inches respectively. Snowfall was 8 inches below normal, and at the end of the month there was 1½ inches of snow on the ground.

J. Y.

Meteorological Report.

January, 1923.

| Results of Observations Taken During the Month | | Mean for 70 years. | |
|--|---|--------------------------|--------|
| BAROMETER | — Mean reading, 32 F. inches | 29.665 | 29.647 |
| | “ Highest on 23rd at 9.38h. | 30.405 | 30.271 |
| | “ Lowest on 18th at 13.35h | 29.103 | 28.913 |
| | “ Range | 1.302 | 1.358 |
| TEMPERATURE | — Highest (S) (1st) | 42.2 | 44.9 |
| | “ Lowest (S) (17th) | -12.0 | -6.8 |
| | “ Range for the month (S), | 54.2 | 51.7 |
| | “ Mean from max. and min. (S) | 21.8 | *21.9 |
| | “ Mean from 24 hourly observations (P) | 21.5 | †21.8 |
| | “ Mean of highest readings (P) | 28.6 | |
| | “ Mean of lowest readings (P) | 13.8 | |
| | “ Mean daily range (P) | 14.8 | |
| | “ Warmest day (P) (18th) | 34.8 | |
| | “ Coldest day (P) (17th) | 1.1 | |
| “ | Range between warmest and coldest (P) | 33.7 | |
| | Highest solar (black bulb in vacuum) (25th) | 88.7 | |
| | “ Lowest radiation (17th) | -12.5 | |
| | “ Monthly range | 101.2 | |
| HUMIDITY | — Mean | 79 | 83 |
| RAINFALL | — Total (inches) | 0.31 | 1.14 |
| | “ Heaviest fall (20th) “ | 0.21 | |
| | “ No. of days on which rain fell | 2 | 4.9 |
| SNOWFALL | — Total fall (inches) | 23.5 | 17.3 |
| | “ Heaviest fall (11th) “ | 7.5 | |
| | “ No. of days on which snow fell | 19 | 14.2 |
| CLOUD | — Mean amount of (0-10) | .78 | .74 |

*1840—1898 †1881—1908 (S) Stevenson (P) Photographic

Results of Observations—January, (Continued)

| | | | |
|-------|--|------------|---|
| WINDS | — Mean velocity | 14.2 miles | |
| | “ Highest velocity, 11th at 20 hrs from east | 46 | “ |
| | “ Highest daily average velocity (11th) | 21.0 | “ |
| | “ Lowest “ “ “ (26th) | 5.4 | “ |
| | “ Days on which gales occurred | 9 | |

| No. of hours in the month in which the wind was | N. | N.E. | E. | S.E. | S. | S.W. | W. | N.W. | C. | Totals |
|---|-----|------|-----|------|----|------|-----|------|----|--------|
| | 104 | 128 | 101 | 52 | 15 | 53 | 151 | 138 | 2 | 744 |

| No. of miles registered from each direction. | 905 | 1893 | 2183 | 868 | 219 | 632 | 1812 | 2024 | — | 10536 |
|--|-----|------|------|-----|-----|-----|------|------|---|-------|
|--|-----|------|------|-----|-----|-----|------|------|---|-------|

Rain on 20th and 21st. Snow on 2nd, 3rd, 4th, 5th, 7th, 8th, 9th, 10th, 11th, 12th, 14th, 15th, 16th, 19th, 22nd, 24th, 26th, 27th, 28th. Clear days 1. Cloudy days 18.

Extreme Readings

DURING 84 YEARS.

| | | | |
|-------------|---|--------|------|
| Barometer | — Highest reading, 1866 (8th) | 30.940 | inch |
| | “ Lowest reading, 1870 (2nd) | 28.166 | “ |
| Temperature | — Highest, 1874 (4th). 1876 (1st) | 57.5° | |
| | “ Lowest 1859 (10th) | -26.5° | |
| | “ Highest daily mean (during 43 yrs) 1906, (22nd) | 49.6° | |
| | “ Lowest daily mean, (during 43 yrs) 1914 (13th) | -15.2° | |
| “ | Highest monthly mean, 1880 | 32.7° | |
| | Lowest monthly mean, 1857 | 12.8° | |
| Rainfall | — Greatest fall, 1843 | 4.30 | in. |
| | “ Least fall, 1852-56, 1918-20 | 0 | “ |
| | “ Greatest fall for one day 1843 (31st) | 2.50 | “ |
| Snowfall | — Greatest number of days rain fell, 1890 | 14 | |
| | “ Greatest fall, 1871 | 43.6 | in. |
| | “ Least fall, 1916 | 3.1 | “ |
| | “ Greatest for one day, 1873 (5th) | 15.3 | |
| “ | Greatest No. days snow fell, 1861-71-93 | 23 | |
| | “ Least No. days snow fell, 1847 | 5 | |

February, 1923.

| Results of Observations Taken During the Month | | Mean for 70 years. | | |
|--|--|----------------------------------|--------|------|
| BAROMETER | — Mean reading, 32 f. inches | 29.718 | 29.638 | |
| | “ Highest on 6th at 7.16h. | 30.225 | 30.226 | |
| | “ Lowest on 3rd at 2.18h. | 29.106 | 28.945 | |
| | “ Range | 1.119 | 1.281 | |
| TEMPERATURE | — Highest (S) (26th) | 42.7 | 44.3 | |
| | “ Lowest (S) (4th) | -5.4 | -7.1 | |
| | “ Range for the month (S), | 48.1 | 51.4 | |
| | “ Mean from max. and min. (S) | 18.8 | *22.5 | |
| | “ Mean from 24 hourly observations (P) | 18.4 | ‡21.0 | |
| | “ Mean of highest readings (P) | 25.8 | | |
| | “ Mean of lowest readings (P) | 10.8 | | |
| | “ Mean daily range (P) | 15.0 | | |
| | “ Warmest day (P) (26th) | 37.0 | | |
| | “ Coldest day (P) (4th) | 2.6 | | |
| HUMIDITY | — Range between warmest and coldest (P) | 34.4 | | |
| | “ Highest solar (black bulb in vacuum (22nd) | 102.2 | | |
| | “ Lowest radiation (4th) | -9.0 | | |
| | “ Monthly range | 111.2 | | |
| | “ Mean | 74 | 81 | |
| | RAINFALL | — Total (inches) | 0.10 | 0.93 |
| | | “ Heaviest fall (26th) | “ 0.10 | |
| | | “ No. of days on which rain fell | 1 | 4.7 |
| | SNOWFALL | — Total fall (inches) | 10.5 | 16.5 |
| | | “ Heaviest fall (12th) | “ 3.8 | |
| “ No. of days on which snow fell | | 18 | 12.4 | |
| CLOUD | — Mean amount of (0-10) | .66 | .76 | |

*1840-1908 ‡1881-1908 (S) Stevenson (P) Photographic

Results of Observations—February, (Continued)

| | | |
|-------|--|------------|
| WINDS | — Mean velocity | 14.7 miles |
| “ | Highest velocity, 14th at 18 hrs from west | 55 “ |
| “ | Highest daily average velocity (14th) | 36.8 “ |
| “ | Lowest “ “ “ (28th) | 5.9 “ |
| “ | Days on which gales occurred | 4 |

| No. of hours in the month in which the wind was | N. | N.E. | E. | S.E. | S. | S.W. | W. | N.W. | C. | Totals |
|---|----|------|----|------|----|------|-----|------|----|--------|
| | 74 | 90 | 36 | 21 | 18 | 79 | 227 | 125 | 2 | 672 |

| No. of miles registered from each direction. | N. | N.E. | E. | S.E. | S. | S.W. | W. | N.W. | C. | Totals |
|--|-----|------|-----|------|-----|------|------|------|----|--------|
| | 665 | 801 | 693 | 258 | 136 | 1320 | 4055 | 1973 | — | 9,901 |

Rain on 26th. Snow on 1st, 2nd, 3rd, 6th, 7th, 10th, 11th, 12th, 13th, 14th, 15th, 16th, 17th, 18th, 20th, 21st, 22nd and 24th. Fog on 21st and 26th. Clear days 2. Cloudy days 9.

Extreme Readings

DURING 84 YEARS.

| | | |
|-------------|---|-------------|
| Barometer | — Highest reading, 1887 (4th) | 30.522 inch |
| “ | Lowest reading, 1918 (25th) | 28.346 “ |
| Temperature | — Highest, 1890 (4th) | 53.8° |
| “ | Lowest 1855 (5th) | -25.4° |
| “ | Highest daily mean (during 43 yrs) 1906, (24th) | 44.1° |
| “ | Lowest daily mean, (during 43 yrs) 1895 (6th) | -11.9° |
| “ | Highest monthly mean, 1882 | 30.3° |
| “ | Lowest monthly mean, 1875 | 10.2° |
| Rainfall | — Greatest fall, 1842 | 3.63 in. |
| “ | Least fall, 1841-46-56-73-77, 1901-16 | 0 “ |
| “ | Greatest fall for one day 1855 (13th) | 1.71 “ |
| “ | Greatest number of days rain fell, 1857, | 11 |
| Snowfall | — Greatest fall, 1846 | 46.1 in. |
| “ | Least fall, 1851 | 2.4 “ |
| “ | Greatest for one day, 1863 (5th) | 16.0 |
| “ | Greatest No. days snow fell, 1843, | 21 |
| “ | Least No. days snow fell, 1851 | 4 |

March, 1923.

| Results of Observations Taken During the Month | | Mean for 70 years. | |
|--|--|--------------------|--------|
| BAROMETER | — Mean reading, 32 F. inches | 29.603 | 29.609 |
| | “ Highest on 15th at 7.04h. | 30.245 | 30.129 |
| | “ Lowest on 12th at 13.37h. | 28.792 | 28.919 |
| | “ Range | 1.453 | 1.210 |
| TEMPERATURE | — Highest (S) (23rd) | 50.8 | 52.1 |
| | “ Lowest (S) (31st) | 3.2 | -2.6 |
| | “ Range for the month (S), | 54.0 | 54.7 |
| | “ Mean from max. and min. (S) | 27.1 | *28.7 |
| | “ Mean from 24 hourly observations (P) | 26.2 | †29.1 |
| | “ Mean of highest readings (P) | 35.0 | |
| | “ Mean of lowest readings (P) | 18.2 | |
| | “ Mean daily range (P) | 16.8 | |
| | “ Warmest day (P) (22nd) | 41.9 | |
| | “ Coldest day (P) (28th) | 7.7 | |
| “ Range between warmest and coldest (P) | 34.2 | | |
| “ Highest solar (black bulb in vacuum) (26th) | 119.0 | | |
| “ Lowest radiation (26th) | 1.5 | | |
| “ Monthly range | 117.5 | | |
| HUMIDITY | — Mean | 73 | 78 |
| | “ Total (inches) | 1.05 | 1.50 |
| RAINFALL | — Heaviest fall (10th) | 0.40 | |
| | “ No. of days on which rain fell | 6 | 6.7 |
| | “ Total fall (inches) | 20.5 | 11.5 |
| SNOWFALL | — Heaviest fall (6th) | 5.6 | |
| | “ No. of days on which snow fell | 13 | 10.4 |
| CLOUD | — Mean amount of (0-10) | .56 | .67 |

*1840—1898 †1881—1908 (S) Stevenson (P) Photographic

Results of Observations—March, (Continued)

| | | |
|-------|--|------------|
| WINDS | — Mean velocity | 16.1 miles |
| “ | Highest velocity, 16th at noon from west | 54 “ |
| “ | Highest daily average velocity (12th) | 30.4 “ |
| “ | Lowest “ “ “ (1st) | 5.5 “ |
| “ | Days on which gales occurred | 11 |

| No. of hours in the month in which the wind was | N. | N.E. | E. | S.E. | S. | S.W. | W. | N.W. | C. | Total |
|---|----|------|----|------|----|------|-----|------|----|-------|
| | 65 | 57 | 87 | 41 | 42 | 117 | 159 | 176 | 0 | 744 |

| No. of miles registered from each direction. | 619 | 924 | 1731 | 576 | 369 | 1466 | 2762 | 3541 | — | 11988 |
|--|-----|-----|------|-----|-----|------|------|------|---|-------|
|--|-----|-----|------|-----|-----|------|------|------|---|-------|

Rain on 4th, 10th, 12th, 15th, 16th and 22nd. Snow on 1st, 4th, 6th, 7th, 9th, 10th, 12th, 19th, 20th, 25th, 27th, 28th and 29th. Fog on 1st and 22nd. Solar halo on 31st. Clear days 4. Cloudy days 7.

Extreme Readings

DURING 84 YEARS.

| | | |
|-------------|---|-------------|
| Barometer | — Highest reading, 1906 (24th) | 30.508 inch |
| “ | Lowest reading, 1859 (19th) | 28.286 “ |
| Temperature | — Highest, 1910 (28th) | 75.2° |
| “ | Lowest 1868 (3rd) | -15.6° |
| “ | Highest daily mean (during 43 yrs) 1910, (30th) | 58.1° |
| “ | Lowest daily mean, (during 43 yrs) 1885 (17th) | -0.4° |
| “ | Highest monthly mean, 1903 | 38.9° |
| “ | Lowest monthly mean, 1885 | 18.5° |
| Rainfall | — Greatest fall, 1859 | 4.05 in. |
| “ | Least fall, 1856, 1889. | 0 “ |
| “ | Greatest fall for one day 1881 (19th) | 1.72 “ |
| “ | Greatest number of days rain fell, 1878, 1921 | 17 |
| “ | Least No. days rain fell, 1856-89 | 0 |
| Snowfall | — Greatest fall, 1870 | 62.4 in. |
| “ | Least fall, 1858, 1903 | 0.2 “ |
| “ | Greatest for one day, 1876 (28th) | 16.2 |
| “ | Greatest No. days snow fell, 1877, | 21 |
| “ | Least No. days snow fell, 1895-98. | 1 |

April, 1923.

| Results of Observations Taken During the Month | | Mean for 70 years. | |
|--|--|--------------------|--------|
| BAROMETER | — Mean reading, 32 F. inches | 29.560 | 29.600 |
| | “ Highest on 1st at 9.34h. | 30.238 | 30.073 |
| | “ Lowest on 8th at 6.12h. | 28.859 | 29.040 |
| | “ Range | 1.379 | 1.033 |
| TEMPERATURE | — Highest (S) (20th) | 80.8 | 68.3 |
| | “ Lowest (S) (1st) | 5.2 | 19.6 |
| | “ Range for the month (S), | 75.6 | 48.7 |
| | “ Mean from max. and min. (S) | 42.5 | *41.2 |
| | “ Mean from 24 hourly observations (P) | 41.9 | †42.1 |
| | “ Mean of highest readings (P) | 51.1 | |
| | “ Mean of lowest readings (P) | 33.7 | |
| | “ Mean daily range (P) | 17.4 | |
| | “ Warmest day (P) (20th) | 64.8 | |
| | “ Coldest day (P) (1st) | 19.4 | |
| “ | Range between warmest and coldest (P) | 45.4 | |
| | Highest solar (black bulb in vacuum (21st) | 127.4 | |
| | “ Lowest radiation (1st) | 2.2 | |
| | “ Monthly range | 125.2 | |
| HUMIDITY | — Mean | 66 | 70 |
| | “ Total (inches) | 2.07 | 2.15 |
| RAINFALL | — Heaviest fall (5th) | 1.06 | |
| | “ No. of days on which rain fell | 10 | 9.9 |
| SNOWFALL | — Total fall (inches) | 2.5 | 2.5 |
| | “ Heaviest fall (15th) | 1.4 | |
| | “ No. of days on which snow fell | 4 | 3.5 |
| CLOUD | — Mean amount of (0-10) | .53 | .58 |

*1840—1898 †1881—1908 (S) Stevenson (P) Photographic

Results of Observations—April, (Continued)

| | | | |
|-------|---|------------|---|
| WINDS | — Mean velocity | 13.7 miles | |
| | “ Highest velocity, 8th at 9 & 10hrs. from west | 44 | “ |
| | “ Highest daily average velocity (14th) | 31.5 | “ |
| | “ Lowest “ “ (26th) | 5.4 | “ |
| | “ Days on which gales occurred | 4 | |

| | | | | | | | | | | |
|---|----|------|-----|------|----|------|-----|------|----|-------|
| No. of hours in the month in which the wind was | N. | N.E. | E. | S.E. | S. | S.W. | W. | N.W. | C. | Total |
| | 78 | 52 | 107 | 25 | 25 | 172 | 151 | 110 | 0 | 720 |

| | | | | | | | | | | |
|--|-----|-----|------|-----|-----|------|------|------|---|------|
| No. of miles registered from each direction. | 953 | 697 | 1884 | 183 | 251 | 2168 | 1987 | 1724 | — | 9847 |
|--|-----|-----|------|-----|-----|------|------|------|---|------|

Rain on 3rd, 5th, 8th, 11th, 15th, 19th, 22nd, 28th, 29th and 30th. Snow on 5th, 10th, 15th and 16th. Thunderstorm on 19th. Solar halo on 26th. Lunar halo on 27th. Heavy dew on 29th. Clear days 8. Cloudy days 7.

Extreme Readings

DURING 84 YEARS.

| | | | |
|-------------|--|--------|------|
| Barometer | — Highest reading, 1897 (20th) | 30.308 | inch |
| | “ Lowest reading, 1863 (2nd), 1887 (28th) | 28.704 | “ |
| Temperature | — Highest, 1842 (22nd) | 89.8° | |
| | “ Lowest 1923 (1st) | 5.2° | |
| “ | Highest daily mean (during 43 yrs) 1915, (25th) | 70.4° | |
| | Lowest daily mean, (during 43 yrs) 1923 (1st) | 19.4° | |
| | Highest monthly mean, 1921 | 49.3° | |
| | Lowest monthly mean, 1874 | 34.2° | |
| Rainfall | — Greatest fall, 1910 | 4.90 | in. |
| | “ Least fall, 1881, | 0.08 | “ |
| | “ Greatest fall for one day 1850 (3rd) | 2.35 | “ |
| | “ Greatest number of days rain fell, 1871, Least No. days rain fell, 1841-81 | 17 | 3 |
| Snowfall | — Greatest fall, 1857 | 12.9 | in. |
| | “ Least fall, 1843-56-58-70-87-88-90-91 | 0.1 | “ |
| | “ Greatest for one day, 1901 (20th) | 8.3 | |
| | “ Greatest No. days snow fell, 1857, Least No. days snow fell, 1878-95-1900. | 11 | 0 |

May, 1923.

| Results of Observations Taken During the Month | | Mean for 70 years. | |
|--|---|--------------------|--------|
| BAROMETER | — Mean reading, 32 F. inches | 29.581 | 29.577 |
| | “ Highest on 23rd at 9h. | 30.018 | 29.967 |
| | “ Lowest on 16th at 13h. | 28.961 | 29.153 |
| | “ Range | 1.057 | 0.814 |
| TEMPERATURE | — Highest (S) (26th) | 83.3 | 77.9 |
| | “ Lowest (S) (10th) | 26.9 | 30.9 |
| | “ Range for the month (S), | 56.4 | 47.9 |
| | “ Mean from max. and min. (S) | 51.6 | *52.4 |
| | “ Mean from 24 hourly observations (P) | 52.1 | ‡53.4 |
| | “ Mean of highest readings (P) | 62.1 | |
| | “ Mean of lowest readings (P) | 41.4 | |
| | “ Mean daily range (P) | 20.7 | |
| | “ Warmest day (P) (26th) | 69.8 | |
| | “ Coldest day (P) (10th) | 34.7 | |
| | “ Range between warmest and coldest (P) | 35.1 | |
| | “ Mean of dew point | 40 | |
| FORCE OF VAPOUR | — Mean | 0.245 | 0.280 |
| | HUMIDITY — Mean | 64 | 70 |
| | RAINFALL — Total (inches) | 3.56 | 2.97 |
| | “ Heaviest fall (15th) “ | 1.44 | |
| SNOWFALL | — No. of days on which rain fell | 8 | 12.4 |
| | “ Total fall (inches) | 1.5 | 0.1 |
| | “ Heaviest fall (9th) “ | 1.3 | |
| | “ No. of days on which snow fell | 2 | 0.4 |
| CLOUD — Mean amount of (0-10) | .35 | .57 | |

*1840—1898 ‡1881—1908 (S) Stevenson (P) Photographic

Results of Observations—May, (Continued)

| | | |
|-------|---|-----------|
| WINDS | — Mean velocity | 9.9 miles |
| “ | Highest velocity, 17th at 8hrs. from west | 34 “ |
| “ | Highest daily average velocity (17th) | 20.5 “ |
| “ | Lowest “ “ (28th) | 3.5 “ |
| “ | Days on which gales occurred | 1 |

| No. of hours in the month in which the wind was | N. | N.E. | E. | S.E. | S. | S.W. | W. | N.W. | C. | Totals |
|---|----|------|-----|------|----|------|-----|------|----|--------|
| | 93 | 141 | 133 | 65 | 46 | 89 | 106 | 67 | 4 | 744 |

| No. of miles registered from each direction. | 931 | 1546 | 1256 | 319 | 280 | 885 | 1076 | 1089 | — | 7373 |
|--|-----|------|------|-----|-----|-----|------|------|---|------|
| | | | | | | | | | | |

Rain on 8th, 9th, 11th, 12th, 15th, 16th, 17th and 20th. Snow on 9th and 10th. Heavy dew on 1st, 2nd, 4th, 19th, 22nd, 25th and 30th. Hoar frost on 3rd, 13th, 14th, and 18th. Fog on 8th, 15th, 16th and 17th. Thunderstorms on 15th and 20th. Clear days 16. Cloudy days 7.

Extreme Readings

DURING 84 YEARS.

| | | |
|-------------|---|-------------|
| Barometer | — Highest reading, 1849 (2nd) | 30.241 inch |
| “ | Lowest reading, 1861 (6th) | 28.644 “ |
| Temperature | — Highest, 1895 (30th) | 93.4° |
| “ | Lowest 1867 (3rd) | 24.6° |
| “ | Highest daily mean (during 43 yrs) 1895, (30th) | 80.9° |
| “ | Lowest daily mean, (during 43 yrs) 1911 (2nd) | 34.1° |
| “ | Highest monthly mean, 1911 | 61.3° |
| “ | Lowest monthly mean, 1867 | 46.6° |
| Rainfall | — Greatest fall, 1894 | 9.37 in. |
| “ | Least fall, 1920, | 0.39 “ |
| “ | Greatest fall for one day 1894 (21st) | 2.70 “ |
| “ | Greatest number of days rain fell, 1890, | 23 |
| “ | Least No. days rain fell, 1920 | 4 |
| Snowfall | — Greatest fall, 1875 | 3.1 in. |
| “ | Least fall, 1910 & 1913 to 1922 | 0 “ |
| “ | Greatest for one day, 1875 (1st) | 3.0 |
| “ | Greatest No. days snow fell, 1905 | 5 |

June, 1923.

| Results of Observations Taken During the Month | | Mean for 70 years. | |
|--|--|--------------------|--------|
| BAROMETER | Mean reading, 32 F. inches | 29.532 | 29.572 |
| " | Highest on 18th at 8h. | 29.768 | 29.909 |
| " | Lowest on 26th at 15.55h. | 28.984 | 29.165 |
| " | Range | 0.784 | 0.744 |
| TEMPERATURE | Highest (S) (24th) | 95.6 | 86.4 |
| " | Lowest (S) (13th) | 44.2 | 40.1 |
| " | Range for the month (S) | 51.4 | 46.3 |
| " | Mean from max. and min. (S) | 66.6 | 62.4 |
| " | Mean from 24 hourly observations (P) | 66.6 | 64.0 |
| " | Mean of highest readings (P) | 77.9 | |
| " | Mean of lowest readings (P) | 56.3 | |
| " | Mean daily range (P) | 21.6 | |
| " | Warmest day (P) (20th) | 80.5 | |
| " | Coldest day (P) (8th) | 56.0 | |
| " | Range between warmest and coldest (P) | 24.5 | |
| " | Mean of dew point | 56 | |
| " | Highest solar (black bulb in vacuum (25th) | 146.1 | |
| " | Lowest radiation (13th) | 40.7 | |
| " | Monthly range | 105.4 | |
| FORCE OF VAPOUR | Mean | 0.468 | 0.418 |
| HUMIDITY | Mean | 71 | 73 |
| RAINFALL | Total (inches) | 4.24 | 2.76 |
| " | Heaviest fall (3rd) | 1.20 | |
| " | No. of days on which rain fell | 10 | 11.7 |
| CLOUD | Mean amount of (0-10) | .39 | .53 |

*1840—1898 †1881—1908 (S) Stevenson (P) Photographic

Results of Observations—June, (Continued)

| | | |
|-------|--|-----------|
| WINDS | Mean velocity | 8.7 miles |
| " | Highest velocity, 8th at 13hrs. from northwest | 34 " |
| " | Highest daily average velocity (8th) | 20.9 " |
| " | Lowest " " " (6th) & (15th) | 3.9 " |
| " | Days on which gales occurred | 2 |

| No. of hours in the month in which the wind was | N. | N.E. | E. | S.E. | S. | S. W. | W. | N. W. | C. | Total |
|---|----|------|-----|------|----|-------|-----|-------|----|-------|
| | 54 | 68 | 110 | 27 | 29 | 165 | 156 | 93 | 18 | 720 |

| No. of miles registered from each direction. | N. | N.E. | E. | S.E. | S. | S. W. | W. | N. W. | C. | Total |
|--|-----|------|-----|------|-----|-------|------|-------|----|-------|
| | 378 | 570 | 717 | 158 | 166 | 1298 | 1370 | 1585 | — | 6242 |

Rain on 3rd, 4th, 5th, 7th, 8th, 14th, 23rd, 25th, 26th and 28th. Thunderstorms on 3rd, 4th, 5th, 7th, 14th, 19th, 23rd and 25th. Lightning alone on 2nd. Heavy dew on 11th, 13th, 15th, 17th, 18th, 19th, 22nd, 25th and 30th. Thunder alone on 24th. Clear days 9. Cloudy days 5.

Extreme Readings

DURING 84 YEARS.

| | | |
|-------------|---|--------------|
| Barometer | Highest reading, 1913 (10th) | 30.160 inch. |
| " | Lowest reading, 1902 (25th) | 28.875 " |
| Temperature | Highest, 1901 (27th) | 97.1° |
| " | Lowest 1842 (10th) | 28.1° |
| " | Highest daily mean (during 43 yrs) 1901, (27th) | 82.0° |
| " | Lowest daily mean, (during 43 yrs) 1910 (5th) | 44.8° |
| " | Highest monthly mean, 1919 | 72.4° |
| " | Lowest monthly mean, 1842 | 56.5° |
| Rainfall | Greatest fall, 1870 | 8.09 in. |
| " | Least fall, 1864, | 0.57 " |
| " | Greatest fall for one day 1892 (19th) | 2.42 " |
| " | Greatest fall (short duration) 1918 (11th), 0.74 inch in 15 minutes; 0.84 inch in half an hour. | |
| " | Greatest number of days rain fell, 1869, | 22 |
| " | Least No. days rain fell, 1864 | 5 |
| Snowfall | Flurries on two days, 1869. | |

July, 1923.

| Results of Observations Taken During the Month | | Mean for 70 years. |
|--|--------|--------------------|
| BAROMETER — Mean reading, 32 F. inches | 29.635 | 29.585 |
| “ Highest on 2nd at 8.28h | 29.963 | 29.889 |
| “ Lowest on 24th at 17.37h. | 29.307 | 29.420 |
| “ Range | 0.656 | 0.469 |
| TEMPERATURE— Highest (S) (20th) | 91.8 | 89.8 |
| “ Lowest (S) (26th) | 51.0 | 47.5 |
| “ Range for the month (S), | 40.8 | 42.3 |
| “ Mean from max. and min. (S) | 69.0 | *67.8 |
| “ Mean from 24 hourly observations (P) | 69.1 | †68.9 |
| “ Mean of highest readings (P) | 79.5 | |
| “ Mean of lowest readings (P) | 59.4 | |
| “ Mean daily range (P) | 20.1 | |
| “ Warmest day (P) (20th) | 79.8 | |
| “ Coldest day (P) (29th) | 61.9 | |
| “ Range between warmest and coldest (P) | 17.9 | |
| “ Mean of dew point | 58 | |
| “ Highest solar (black bulb in vacuum (21st) | 144.0 | |
| “ Lowest radiation (26th) | 47.4 | |
| “ Monthly range | 96.6 | |
| FORCE OF VAPOUR—Mean | 0.483 | 0.488 |
| HUMIDITY — Mean | 69 | 72 |
| RAINFALL — Total (inches) | 1.72 | 3.04 |
| “ Heaviest fall (15th) “ | 0.35 | |
| “ No. of days on which rain fell | 10 | 11.2 |
| CLOUD — Mean amount of (0-10) | .43 | .49 |

*1840—1898 †1881—1908 (S) Stevenson (P) Photographic

Results of Observations—July, (Continued)

| | |
|---|-----------|
| WINDS — Mean velocity | 7.2 miles |
| “ Highest velocity, 25th at 16hrs. from northwest | 23 “ |
| “ Highest daily average velocity (25th) | 13.5 “ |
| “ Lowest “ “ (10th) | 4.3 “ |
| “ Days on which gales occurred | 0 |

| No. of hours in the month in which the wind was | N. | N.E. | E. | S.E. | S. | S.W. | W. | N.W. | C. | Totals |
|---|----|------|-----|------|----|------|-----|------|----|--------|
| | 70 | 178 | 129 | 20 | 52 | 125 | 102 | 63 | 5 | 744 |

| No. of miles registered from each direction. | 502 | 1466 | 866 | 124 | 356 | 848 | 642 | 597 | — | 5401 |
|--|-----|------|-----|-----|-----|-----|-----|-----|---|------|
|--|-----|------|-----|-----|-----|-----|-----|-----|---|------|

Rain on 2nd, 3rd, 5th, 6th, 9th, 14th, 15th, 16th, 24th and 27th, Thunderstorms on 2nd, 3rd, 9th, 14th, 15th and 21st. Heavy dew on 1st, 7th, 8th, 11th, 12th, 13th, 14th, 17th, 19th and 25th. Fog on 29th. Clear days 8. Cloudy days 5.

Extreme Readings

DURING 84 YEARS.

| | |
|--|--------------|
| Barometer — Highest reading, 1892 (7th) | 30.192 inch. |
| “ Lowest reading, 1911 (24th) | 29.006 “ |
| Temperature— Highest, 1911 (3rd) | 103.2° |
| “ Lowest 1843 (12th) | 38.7° |
| “ Highest daily mean (during 43 yrs) 1911, (3rd) | 91.3° |
| “ Lowest daily mean, (during 43 yrs) 1891 (7th) | 56.4° |
| “ Highest monthly mean, 1921 | 77.9° |
| “ Lowest monthly mean, 1884 | 64.0° |
| Rainfall — Greatest fall, 1841 | 8.15 in. |
| “ Least fall, 1916, | 0.36 “ |
| “ Greatest fall for one day 1897 (27th) | 3.88 “ |
| “ Greatest number of days rain fell, 1861, 1866-70-80 1902, 1917 | 16 |
| “ Least No. days rain fell, 1849 | 4 |

August, 1923.

| <i>Results of Observations Taken During the Month</i> | | Mean for 70 years. |
|---|--------|--------------------|
| BAROMETER — Mean reading, 32 F. inches | 29.587 | 29.617 |
| “ Highest on 9th at 9.00h | 29.815 | 29.909 |
| “ Lowest on 21st at 15.38h. | 29.081 | 29.257 |
| “ Range | 0.734 | 0.652 |
| TEMPERATURE—Highest (S) (7th) | 89.8 | 87.0 |
| “ Lowest (S) (23rd) | 42.6 | 45.7 |
| “ Range for the month (S), | 47.2 | 41.3 |
| “ Mean from max. and min. (S) | 65.8 | *66.3 |
| “ Mean from 24 hourly observations (P) | 65.3 | †66.9 |
| “ Mean of highest readings (P) | 76.6 | |
| “ Mean of lowest readings (P) | 55.2 | |
| “ Mean daily range (P) | 21.4 | |
| “ Warmest day (P) (7th) | 75.6 | |
| “ Coldest day (P) (23rd) | 53.0 | |
| “ Range between warmest and coldest (P) | 22.6 | |
| “ Mean of dew point | 55 | |
| “ Highest solar (black bulb in vacuum (3rd) | 147.0 | |
| “ Lowest radiation (23rd) | 39.0 | |
| “ Monthly range | 108.0 | |
| FORCE OF VAPOUR—Mean | 0.441 | 0.483 |
| HUMIDITY — Mean | 69 | 74 |
| RAINFALL — Total (inches) | 3.58 | 2.77 |
| “ Heaviest fall (18th) | 0.90 | |
| “ No. of days on which rain fell | 10 | 10.9 |
| CLOUD — Mean amount of (0-10) | .38 | .49 |

*1840—1893 †1881—1908 (S) Stevenson (P) Photographic

Results of Observations—August, (Continued)

| | | |
|---|-----------|---|
| WINDS — Mean velocity | 8.7 miles | |
| “ Highest velocity, 24th at 17hrs. from west | 29 | “ |
| “ Highest daily average velocity (21st and 22nd | 16.4 | “ |
| “ Lowest “ “ “ (30th) | 3.3 | “ |
| “ Days on which gales occurred | 0 | |

| No. of hours in the month in which the wind was | N. | N. E. | E. | S. E. | S. | S. W. | W. | N. W. | C. | Totals. |
|---|-----|-------|-----|-------|----|-------|----|-------|----|---------|
| | 122 | 57 | 110 | 53 | 35 | 124 | 96 | 126 | 21 | 744 |

| No. of miles registered from each direction. | S13 | 473 | 755 | 293 | 269 | 1192 | 882 | 1766 | — | 6448 |
|--|-----|-----|-----|-----|-----|------|-----|------|---|------|
|--|-----|-----|-----|-----|-----|------|-----|------|---|------|

Rain on 2nd, 6th, 7th, 8th, 14th, 18th, 19th, 21st, 24th, 28th. Thunderstorms 2nd, 4th, 6th, 14th, 18th, 24th. Heavy dew on 1st, 4th, 9th, 10th, 11th, 12th, 16th, 17th, 20th, 23rd, 24th, 26th, 27th, 29th, 30th, 31st. Thunder alone on 28th. Fog on 30th and 31st. Hail on 24th. Eclipse of moon, 27th. Clear days 10. Cloudy days 1.

Extreme Readings

DURING 84 YEARS.

| | | |
|--|--------|-------|
| Barometer — Highest reading, 1918 (19th) | 30.104 | inch. |
| “ Lowest reading, 1912 (22nd) | 29.028 | “ |
| Temperature— Highest, 1918 (13th) | 102.2° | |
| “ Lowest, 1855 (18th), 1870 (27th) | 40.0° | |
| “ Highest daily mean (during 43 yrs) 1900 (8th), 1916 (21st) | 84.8° | |
| “ Lowest daily mean, (during 43 yrs) 1912 (30th) | 52.4° | |
| “ Highest monthly mean, 1900 | 72.5° | |
| “ Lowest monthly mean, 1866 | 60.8° | |
| Rainfall — Greatest fall, 1915 | 8.14 | in. |
| “ Least fall, 1876 | 0 | “ |
| “ Greatest fall for one day 1905 (15th) | 3.68 | “ |
| “ Greatest fall for any 24 hours 8 a.m. 3rd, to 8 a.m. 4th, | 4.26 | “ |
| “ Greatest fall, short duration, 1918 (21st) .50 inches in 5 min., .70 in. in 10 min., 1.25 in. in 40 min., 1.95 in. in 2 hrs. | | |
| “ Greatest number of days rain fell, 1872 | 19 | |
| “ Least No. days rain fell, 1876 | 0 | |

September 1923.

| <i>Results of Observations Taken During the Month</i> | | | Mean for 70 years. |
|---|---|--------|--------------------------|
| BAROMETER | — Mean reading, 32 F. inches | 29.707 | 29.667 |
| | “ Highest on 17th at 7.52h | 30.173 | 30.037 |
| | “ Lowest on 8th at 1.09h. | 29.356 | 29.187 |
| | “ Range | 0.817 | 0.850 |
| TEMPERATURE | — Highest (S) (1st) | 84.6 | 82.7 |
| | “ Lowest (S) (14th) | 37.4 | 35.7 |
| | “ Range for the month (S) | 47.2 | 47.0 |
| | “ Mean from max. and min. (S) | 60.7 | *58.8 |
| | “ Mean from 24 hourly observations (P) | 60.0 | †60.5 |
| | “ Mean of highest readings (P) | 69.0 | |
| | “ Mean of lowest readings (P) | 51.7 | |
| | “ Mean daily range (P) | 17.3 | |
| | “ Warmest day (P) (7th) | 70.1 | |
| | “ Coldest day (P) (14th) | 47.2 | |
| | “ Range between warmest and coldest (P) | 22.9 | |
| | “ Mean of dew point | 53 | |
| | “ Highest solar (black bulb in vacuum) (9th) | 138.0 | |
| “ Lowest radiation (14th) | 33.2 | | |
| “ Monthly range | 104.8 | | |
| FORCE OF VAPOUR | — Mean | 0.425 | 0.393 |
| HUMIDITY | — Mean | 78 | 78 |
| | | | |
| RAINFALL | — Total (inches) | 2.67 | 3.18 |
| | “ Heaviest fall (28th) “ | 0.52 | |
| | “ No. of days on which rain fell | 12 | 11.4 |
| CLOUD | — Mean amount of (0-10) | .48 | .50 |
| | | | |

*1840—1898 †1881—1908 (S) Stevenson (P) Photographic

Results of Observations—September (Continued)

| | | | |
|--------------|---|--|-----------|
| WINDS | — | Mean velocity | 8.3 miles |
| " | | Highest velocity, 20th at 16hrs. from northeast, | 28 " |
| " | | Highest daily average velocity (13th) | 16.2 " |
| " | | Lowest " " " (25th) | 2.0 " |
| " | | Days on which gales occurred | 0 |

| No. of hours in the month in which the wind was | N. | N. E. | E. | S. E. | S. | S. W. | W. | N. W. | C. | Totals. |
|---|-----|-------|----|-------|----|-------|----|-------|----|---------|
| | 111 | 166 | 87 | 35 | 33 | 95 | 87 | 92 | 14 | 720 |

| No. of miles registered from each direction. | 767 | 1258 | 755 | 242 | 295 | 867 | 878 | 939 | — | 6001 |
|--|-----|------|-----|-----|-----|-----|-----|-----|---|------|
|--|-----|------|-----|-----|-----|-----|-----|-----|---|------|

Rain on 3rd, 7th, 8th, 9th, 11th, 12th, 13th, 18th, 20th, 21st, 27th and 28th. Thunderstorms on 3rd, 7th, 21st, 28th. Heavy dew on 1st, 2nd, 4th, 5th, 10th, 11th, 13th, 14th, 16th, 19th, 20th, 22nd, 23rd, 24th, 25th, 26th, 28th, 30th. Hoar frost on 17th. Fog 18th, 23rd. Clear days 8. Cloudy days 5.

Extreme Readings

DURING 84 YEARS.

| | | | |
|--------------------|---|---|--------------|
| Barometer | — | Highest reading, 1904 (22nd) | 30.243 inch. |
| " | | Lowest reading, 1848 (29th) | 28.863 " |
| Temperature | — | Highest, 1898 (2nd) | 97.1° |
| " | | Lowest, 1896 (23rd) | 27.6° |
| " | | Highest daily mean (during 43 yrs) 1881 (6th) | 81.3° |
| " | | Lowest daily mean, (during 43 yrs) 1883 (30th), 1888 (30th) | 41.4° |
| " | | Highest monthly mean, 1921 | 67.7° |
| " | | Lowest monthly mean, 1848 | 53.4° |
| Rainfall | — | Greatest fall, 1843 | 9.76 in. |
| " | | Least fall, 1897 | 0.40 " |
| " | | Greatest fall for one day 1843 (14th) | 3.46 " |
| " | | Greatest number of days rain fell, 1907 | 19 |
| " | | Least No. days rain fell, 1840, 1844 | 4 |

October, 1923.

| Results of Observations Taken During the Month | | Mean for 70 years. | |
|--|---|--------------------|--------|
| BAROMETER | — Mean reading, 32 F. inches | 29.731 | 29.651 |
| " | — Highest on 8th at 10h | 30.097 | 30.112 |
| " | — Lowest on 19th at 13hrs. | 29.032 | 29.066 |
| " | — Range | 1.065 | 1.046 |
| TEMPERATURE | — Highest (S) (13th) | 68.8 | 70.3 |
| " | — Lowest (S) (6th) | 31.8 | 25.5 |
| " | — Range for the month (S) | 37.0 | 44.8 |
| " | — Mean from max. and min. (S) | 48.8 | *46.6 |
| " | — Mean from 24 hourly observations (P) | 48.0 | *48.1 |
| " | — Mean of highest readings (P) | 56.6 | |
| " | — Mean of lowest readings (P) | 40.4 | |
| " | — Mean daily range (P) | 16.2 | |
| " | — Warmest day (P) (17th) | 57.7 | |
| " | — Coldest day (P) (31st) | 34.6 | |
| " | — Range between warmest and coldest (P) | 23.1 | |
| " | — Highest solar (black bulb in vacuum (2nd) | 126.0 | |
| " | — Lowest radiation (22nd) | 26.0 | |
| " | — Monthly range | 100.0 | |
| FORCE OF VAPOUR | — Mean | 0.260 | 0.258 |
| HUMIDITY | — Mean | 73 | 79 |
| RAINFALL | — Total (inches) | 1.65 | 2.40 |
| " | — Heaviest fall (24th) " | 0.65 | |
| " | — No. of days on which rain fell | 7 | 12.4 |
| SNOWFALL | — Total fall (inches) | 0.1 | 0.6 |
| " | — No. of days on which snow fell | 1 | 1.6 |
| CLOUD | — Mean amount of (0-10) | .47 | .61 |

*1840—1898 †1881—1908 (S) Stevenson (P) Photographic.

Results of Observations—October (Continued)

| | | |
|-------|---|------------|
| WINDS | — Mean velocity | 10.5 miles |
| " | — Highest velocity, 20th at 10hrs. from west, | 29 " |
| " | — Highest daily average velocity (20th) | 17.7 " |
| " | — Lowest " " (12th) | 3.6 " |
| " | — Days on which gales occurred | 0 |

| No. of hours in the month in which the wind was | N. | N. E. | E. | S. E. | S. | S. W. | W. | N. W. | C. | Totals |
|---|----|-------|-----|-------|----|-------|-----|-------|----|--------|
| | 90 | 87 | 117 | 2 | 29 | 65 | 207 | 148 | 9 | 744 |

| No. of miles registered from each direction. | 689 | 880 | 1351 | 16 | 216 | 524 | 2430 | 1722 | — | 7808 |
|--|-----|-----|------|----|-----|-----|------|------|---|------|
|--|-----|-----|------|----|-----|-----|------|------|---|------|

Rain on 3rd, 13th, 14th, 24th, 25th, 28th, 30th. Snow on 31st.
Heavy dew on 1st, 2nd, 3rd, 15th, 17th, 18th, 19th. Aurora IV. on 15th. Hoar frost on 5th, 6th, 8th, 9th, 22nd, 23rd, 27th, 29th. Fog on 12th, 13th, 16th, 17th, 30th. Clear days 6. Cloudy days 5.

Extreme Readings

DURING 84 YEARS.

| | | |
|-------------|--|--------------|
| Barometer | — Highest reading, 1847 (28th) | 30.396 inch. |
| " | — Lowest reading, 1893 (14th) | 28.227 " |
| Temperature | — Highest, 1897 (15th) | 85.7° |
| " | — Lowest, 1844 (31st) | 15.9° |
| " | — Highest daily mean (during 43 yrs) 1897 (15th) | 71.0° |
| " | — Lowest daily mean, (during 43 yrs) 1887 (30th) | 27.8° |
| " | — Highest monthly mean, 1900 | 55.7° |
| " | — Lowest monthly mean, 1841 | 41.8° |
| Rainfall | — Greatest fall, 1849 | 5.97 in. |
| " | — Least fall, 1901 | 0.56 " |
| " | — Greatest fall for one day 1849 (6th) | 3.16 " |
| " | — Greatest number of days rain fell, 1864 | 22 |
| " | — Least No. days rain fell, 1841 | 6 |
| Snowfall | — Greatest fall, 1844 | 12.0 in. |
| " | — Least fall, 1916-18-19-21-22 | 0 " |
| " | — Greatest for one day, 1875 (17th) | 3.3 " |
| " | — Greatest No. days snow fell, 1869 | 7 |

November, 1923.

| <i>Results of Observations Taken During the Month</i> | | | Mean for 70 years. |
|---|--|--------|--------------------------|
| BAROMETER | — Mean reading, 32 F, inches | 29.660 | 29.627 |
| " | Highest on 12th at 10.27h | 30.141 | 30.169 |
| " | Lowest on 7th at 12.04h. | 29.142 | 28.975 |
| " | Range | 0.999 | 1.194 |
| TEMPERATURE | — Highest (S) (10th) | 57.9 | 57.9 |
| " | Lowest (S) (19th) | 21.8 | 13.5 |
| " | Range for the month (S) | 36.1 | 44.4 |
| " | Mean from max. and min. (S) | 39.0 | *36.0 |
| " | Mean from 24 hourly observations (P) | 39.1 | ‡37.7 |
| " | Mean of highest readings (P) | 44.4 | |
| " | Mean of lowest readings (P) | 33.5 | |
| " | Mean daily range (P) | 10.9 | |
| " | Warmest day (P) (21st) | 48.4 | |
| " | Coldest day (P) (19th) | 30.5 | |
| " | Range between warmest and coldest (P) | 17.9 | |
| " | Highest solar (black bulb in vacuum (2nd) | 102.8 | |
| " | Lowest radiation (19th) | 17.2 | |
| " | Monthly range | 85.6 | |
| FORCE OF VAPOUR | — Mean | 0.195 | 0.178 |
| HUMIDITY | — Mean | 77 | 80 |
| RAINFALL | — Total (inches) | 3.10 | 2.49 |
| " | Heaviest fall (30th) " | 1.35 | |
| " | No. of days on which rain fell | 10 | 10.3 |
| SNOWFALL | — Total fall inches | 2.0 | 4.6 |
| " | Heaviest fall (23rd) " | 1.8 | |
| " | No. of days on which snow fell | 2 | 7.3 |
| CLOUD | — Mean amount of (0-10) | .66 | .74 |

*1840—1898 ‡1881—1908 (S) Stevenson (P) Photographic.

Results of Observations—November, (Continued)

| | | | |
|--------------|---|---|------------|
| WINDS | — | Mean velocity | 10.8 miles |
| " | | Highest velocity, 23rd at 16hrs. from east, | 35 " |
| " | | Highest daily average velocity (23rd) | 22.3 " |
| " | | Lowest " " " (16th) | 3.1 " |
| " | | Days on which gales occurred | 1 |

| No. of hours in the month in which the wind was | N. | N. E. | E. | S. E. | S. | S. W. | W. | N. W. | C. | Totals. |
|---|----|-------|-----|-------|----|-------|-----|-------|----|---------|
| | 85 | 79 | 103 | 25 | 23 | 142 | 106 | 147 | 10 | 720 |

| No of miles registered from each direction. | 720 | 589 | 1230 | 253 | 182 | 1728 | 1182 | 1928 | — | 7812 |
|---|-----|-----|------|-----|-----|------|------|------|---|------|
|---|-----|-----|------|-----|-----|------|------|------|---|------|

Rain on 4th, 5th, 6th, 7th, 16th, 18th, 23rd, 26th, 29th, 30th.
 Snow on 7th, 23rd. Fog on 5th, 15th, 16th, 26th, 30th. Heavy dew on 16th. Clear days 2. Cloudy days 14.

Extreme Readings

DURING 84 YEARS.

| | | | |
|--------------------|---|---|----------------|
| Barometer | — | Highest reading, 1887 (30th) | 30.592 inch. |
| " | | Lowest reading, 1913 (9th) | 28.327 " |
| Temperature | — | Highest, 1903 (3rd) | 70.2° |
| " | | Lowest, 1875 (30th) | -5.0° |
| " | | Highest daily mean (during 43 yrs) | |
| | | 1882 (11th) | 58.0° |
| " | | Lowest daily mean, (during 43 yrs) | |
| | | 1891 (29th) | 11.4° |
| " | | Highest monthly mean, 1902 | 42.9° |
| " | | Lowest monthly mean, 1873 | 27.6° |
| Rainfall | — | Greatest fall, 1846 | 5.80 in. |
| " | | Least fall, 1904 | 0.08 " |
| " | | Greatest fall for one day 1861 (2nd) | 3.13 " |
| " | | Greatest number of days rain fell, 1877 | 16 |
| | | Least No. days rain fell, 1904 | 4 |
| Snowfall | — | Greatest fall, 1873 | 19.6 in. |
| " | | Least fall, 1847 and 1850 | not measurable |
| " | | Greatest for one day, 1873 (27th) | 9.5 " |
| " | | Greatest No. days snow fell, 1869-73-92 | 18 |
| | | Least No. days snow fell, 1850, 1899 | 1 |

December, 1923.

| Results of Observations Taken During the Month | | Mean for 70 years. | |
|--|---|--------------------|--------|
| BAROMETER | — Mean reading, 32 F. inches | 29.604 | 29.644 |
| | “ Highest on 14th at 23.07h | 30.265 | 30.226 |
| | “ Lowest on 28th at 3.38h. | 28.695 | 28.936 |
| | “ Range | 1.570 | 1.290 |
| TEMPERATURE | — Highest (S) (13th) | 53.1 | 47.5 |
| | “ Lowest (S) (24th) | 18.4 | -2.3 |
| | “ Range for the month (S), | 34.7 | 49.8 |
| | “ Mean from max. and min. (S) | 36.1 | *26.2 |
| | “ Mean from 24 hourly observations (P) | 36.1 | ‡27.6 |
| | “ Mean of highest readings (P) | 41.1 | |
| | “ Mean of lowest readings (P) | 31.3 | |
| | “ Mean daily range (P) | 9.8 | |
| | “ Warmest day (P) (8th) | 47.3 | |
| | “ Coldest day (P) (30th) | 24.1 | |
| | “ Range between warmest and coldest (P) | 23.2 | |
| HUMIDITY | — Mean | 78 | 82 |
| | RAINFALL — Total (inches) | 2.47 | 1.53 |
| | “ Heaviest fall (6th) “ | 0.92 | |
| | “ No. of days on which rain fell | 9 | 6.3 |
| SNOWFALL | — Total fall (inches) | 5.5 | 13.0 |
| | “ Heaviest fall (23rd) “ | 2.9 | |
| | “ No. of days on which snow fell | 4 | 13.1 |
| CLOUD | — Mean amount of (0-10) | .76 | .77 |

*1840—1898 ‡1881—1908 (S) Stevenson (P) Photographic

Results of Observations—December, (Continued)

| | | |
|-------|--|------------|
| WINDS | — Mean velocity | 14.9 miles |
| “ | Highest velocity, 28th at 10 and 11 hrs. | |
| “ | from west | 45 “ |
| “ | Highest daily average velocity (28th) | 30.2 “ |
| “ | Lowest “ “ “ (21st) | 4.5 “ |
| “ | Days on which gales occurred | 7 |

| No. of hours in the month in which the wind was | N. | N. E. | E. | S. E. | S. | S. W. | W. | N. W. | C. | Totals. |
|---|----|-------|----|-------|----|-------|-----|-------|----|---------|
| | 50 | 128 | 47 | 33 | 22 | 197 | 190 | 72 | 5 | 744 |

| No. of miles registered from each direction. | 412 | 2220 | 948 | 382 | 208 | 2817 | 2922 | 1174 | — | 11083 |
|--|-----|------|-----|-----|-----|------|------|------|---|-------|
|--|-----|------|-----|-----|-----|------|------|------|---|-------|

Rain on 2nd, 4th, 5th, 6th, 8th, 12th, 13th, 20th, 28th. Snow on 23rd, 27th, 30th, 31st. Fog on 19th. Clear days 1. Cloudy days 17.

Extreme Readings

DURING 84 YEARS.

| | | |
|-------------|--|--------------|
| Barometer | — Highest reading, 1887 (1st) | 30.594 inch. |
| “ | Lowest reading, 1859 (9th), 1856 (14th) | 28.450 “ |
| Temperature | — Highest, 1875 (31st) | 61.0° |
| “ | Lowest 1871 (21st) | -21.0° |
| “ | Highest daily mean (during 43 yrs) 1911, (11th) | 51.9° |
| “ | Lowest daily mean, (during 43 yrs) 1917 (29th) | -9.7° |
| “ | Highest monthly mean, 1923 | 36.1° |
| “ | Lowest monthly mean, 1876 | 17.2° |
| Rainfall | — Greatest fall, 1841 | 6.60 in. |
| “ | Least fall, 1840, 1845, 1876 | 0 “ |
| “ | Greatest fall for one day 1870 (6th) | 1.95 “ |
| “ | Greatest number of days rain fell, 1889 and 1911 | 14 |
| “ | Least No. days rain fell, 1876 | 0 |
| Snowfall | — Greatest fall, 1872 | 38.0 in. |
| “ | Least fall, 1877 | 0.3 “ |
| “ | Greatest for one day, 1898 (4-5) | 16.0 “ |
| “ | Greatest No. days snow fell, 1872 | 24 |
| “ | Least No. days snow fell, 1895 | 3 |

Summary of Observations, 1923.

| Results of Observations Taken During the Year. | | Mean for 70 years |
|--|--------------|-------------------|
| READINGS OF BAROMETER IN INCHES. | | |
| Mean of the year | 29.632 | 29.619 |
| Highest monthly mean, October | 29.731 | |
| Lowest " June | 29.532 | |
| Highest reading, January 23rd | 30.405 | 30.371 |
| Lowest " December 28th | 28.695 | 28.707 |
| Range | 1.710 | 1.664 |
| THERMOMETER, FAHRENHEIT. | | |
| Highest monthly mean temperature, July | 69.0 | |
| Lowest " " February | 18.8 | |
| Highest daily mean temperature, June 20th | 80.5 | |
| Lowest " " January 17th | 1.1 | |
| Highest temperature, June 24th | 95.6 | 91.2 |
| Lowest " January 17th | -12.0 | -12.0 |
| Range for the year | 107.6 | 103.2 |
| Mean from max. and min. | 45.6 | *44.2 |
| Mean from 24 hourly observations | 45.4 | †45.0 |
| Mean humidity | 73 | 77 |
| Highest solar (black bulb in vacuum) Aug. 3rd | 147.0 | |
| Lowest (radiation) on January 17th | -12.5 | |
| Yearly range | 159.5 | |
| Total fall of rain | inches 26.52 | 26.86 |
| Greatest monthly rainfall, June | " 4.24 | |
| Least " " February | " 0.10 | |
| Greatest rainfall in one day, May 15th | " 1.44 | |
| Number of days rain fell | 95 | 112.9 |
| Total fall of snow | inches 71.1 | 66.1 |
| Greatest monthly snowfall, January | " 28.5 | |
| Greatest snowfall in 24 hrs. Jan. 11th | " 7.5 | |
| Number of days on which snow fell | 63 | 62.9 |
| Mean amount of cloud (0-10) | .54 | .62 |
| *1840-1898 | †1881-1908 | |

Wind Summary, 1923.

| | |
|---|---------|
| Total mileage for year | 100,440 |
| Greatest monthly mileage, March | 11,988 |
| Greatest mileage in 24 hours, February 14th | 882 |
| Greatest mileage in 1 hour (February 14th at 18hrs.) | 55 |
| Number of gales | 39 |
| Average velocity for year | 11.5 |
| Prevailing direction, west. Mileage, 21,989. Total hours, 1,738 | |

Harbor Notes.

The following table gives the dates on which the ice formed and left Toronto harbor for the past 25 years.

(This table has been kindly furnished by the Toronto Harbor Master.)

| Winter | Frozen over | Clear of ice | No. of days |
|------------------------------|-------------------------|--------------|-------------|
| 1898-99 | December 13th | April 8th | 116 |
| 1899-00 | " 28th | " 8th | 101 |
| 1900-01 | " 14th | " 6th | 113 |
| 1901-02 | " 6th | March 20th | 104 |
| 1902-03 | " 15th | " 15th | 90 |
| 1903-04 | " 14th | April 22nd | 130 |
| 1904-05 | " 11th | " 5th | 115 |
| 1905-06 | January 8th | " 1st | 83 |
| 1906-07 | December 8th | March 28th | 110 |
| 1907-08 | January 28th | " 29th | 61 |
| 1908-09 | " 7th | " 31st | 83 |
| 1909-10 | December 29th | " 20th | 81 |
| 1910-11 | " 10th | " 31st | 111 |
| 1911-12 | January 6th | April 16th | 101 |
| 1912-13 | " 9th | March 20th | 70 |
| 1913-14 | " 14th | April 2nd | 78 |
| 1914-15 | December 15th | " 2nd | 108 |
| 1915-16 | " 27th | " 3rd | 98 |
| 1916-17 | " 11th | March 28th | 107 |
| 1917-18 | " 11th | April 5th | 115 |
| 1918-19 | January 5th | January 9th | 4 |
| * 1919-20 | December 17th | March 28th | 103 |
| 1920-21 | " 31st | February 3rd | 17* |
| 1921-22 | " 22nd | March 10th | 52* |
| 1922-23 | " 29th | April 9th | 87* |
| Longest time frozen, 1831-32 | Nov. 10th to Apr. 15th, | | 162 days |
| Shortest " " 1918-19 | January 5th to 9th. | | 4 |

*Clear at intervals.

Absolute Extremes.

During 84 Years.

Readings of the barometer, in inches.

| | |
|---------------------------------------|--------|
| Highest yearly mean, 1849, | 29.668 |
| Lowest " " 1864, | 29.560 |
| Highest monthly mean, February, 1906, | 29.819 |
| Lowest " " April, 1920, | 29.411 |
| Greatest monthly range January, 1870, | 2.046 |
| Least " " June, 1841, | 0.425 |
| Highest reading, January 8th, 1866, | 30.940 |
| Lowest " " January 2nd, 1870, | 28.166 |
| Extreme range | 2.774 |

Temperatures.

| | |
|---|-------|
| Highest reading on July 3rd, 1911 | 103.2 |
| Lowest reading on January 10th, 1859, | -28.5 |
| Highest daily mean temperature, (during 43 years) July 3rd, 1911 | 91.3 |
| Lowest daily mean temperature (during 43 years) Jan. 13th, 1914 | -15.2 |
| Highest monthly mean, July, 1921, | 77.9 |
| Lowest " " February, 1875, | 10.2 |
| Highest yearly " 1921, | 49.8 |
| Lowest " " 1875, | 40.8 |

Rainfall, in inches.

| | |
|--|------|
| Greatest fall in one day, July 27th, 1897, | 3.88 |
| Greatest rainfall in a month, September, 1843, | 9.7 |
| Greatest rainfall in a year, 1843, | 43.8 |
| Least " " " " 1874, | 17.5 |
| Greatest number of rainy days in a month, May, 1890, | 2 |
| Greatest number of rainy days in a year, 1890, | 14 |
| Least " " " " " " 1841, | 8 |

Absolute Extremes—(Continued.)

DURING 84 YEARS.

Snowfall in Inches.

| | |
|---|-------|
| Greatest fall in one day, March 28th, 1876, | 16.2 |
| Greatest fall in a month, March, 1870, | 62.4 |
| Greatest fall of snow in a year in 1870, | 122.9 |
| Least " " " " " " 1919, | 28.7 |
| Greatest fall in any winter, 1869-70, | 123.5 |
| Least fall in any winter, 1877-78 and 1905-06, | 30.2 |
| Greatest No. of days of snow in a month, Dec. 1870 and December 1872 | 24 |
| Greatest number of days of snow in a year, 1859, | 87 |
| Least " " " " " " " 1848, | 33 |

Dates of Certain Periodic Events.

| | EXTREME | 1923 |
|------------------------------|----------------|------------|
| Latest snow..... | June 4, 1859 | May 10th |
| Earliest snow..... | Sept. 25, 1860 | Oct. 31st |
| Latest hoar frost..... | June 20, 1862 | May 18th |
| Earliest hoar frost..... | Aug. 26, 1863 | Sept. 17th |
| Earliest thunder & lightning | Jan. 12, 1898 | April 19th |
| Latest thunder and lightning | Dec. 23, 1871 | Sept. 28th |

TOTAL AMOUNT OF SUNSHINE RECORDED ON EACH DAY—1923.

| Month. | 1 | 2 | 3 | 4 | 5 | 6 | 7 | 8 | 9 | 10 | 11 | 12 | 13 | 14 | 15 | 16 | 17 |
|------------|------|------|------|------|------|------|------|------|------|------|------|------|------|------|------|------|------|
| January. | 0 | 0.3 | 0 | 0 | 0 | 3.7 | 0 | 0 | 0 | 2.2 | 0 | 0.2 | 7.1 | 0 | 1.7 | 0.5 | 4.6 |
| February. | 0 | 3.7 | 4.9 | 5.2 | 8.1 | 0 | 0.6 | 2.3 | 0.8 | 8.8 | 5.6 | 0 | 2.5 | 0 | 2.0 | 1.9 | 8.0 |
| March. | 0 | 3.9 | 6.7 | 0.7 | 6.0 | 0 | 4.9 | 7.6 | 7.6 | 5.9 | 7.5 | 1.2 | 7.4 | 9.9 | 2.7 | 2.5 | 9.3 |
| April. | 10.9 | 3.1 | 0 | 0 | 0 | 11.3 | 0.1 | 0.3 | 8.2 | 5.9 | 3.1 | 12.1 | 6.0 | 9.7 | 2.0 | 2.7 | 6.4 |
| May. | 10.3 | 13.4 | 12.9 | 12.5 | 11.8 | 13.7 | 12.2 | 0 | 0.2 | 4.9 | 0.8 | 0 | 13.3 | 12.0 | 1.0 | 2.4 | 0 |
| June. | 11.9 | 11.5 | 2.5 | 5.8 | 8.8 | 0 | 0 | 3.0 | 13.7 | 13.1 | 9.9 | 12.8 | 13.3 | 3.6 | 12.3 | 11.8 | 13.0 |
| July. | 13.1 | 8.3 | 6.0 | 12.9 | 11.4 | 11.1 | 13.9 | 12.0 | 6.3 | 2.1 | 7.5 | 13.2 | 13.8 | 4.7 | 0 | 11.5 | 14.2 |
| August. | 9.9 | 5.2 | 10.3 | 10.1 | 11.1 | 11.7 | 10.9 | 10.6 | 13.2 | 10.4 | 11.7 | 7.4 | 12.7 | 3.3 | 10.6 | 12.7 | 12.4 |
| September. | 5.0 | 3.0 | 0 | 9.9 | 6.6 | 9.0 | 5.2 | 5.8 | 9.4 | 11.6 | 8.4 | 9.9 | 7.3 | 5.4 | 4.4 | 10.0 | 8.9 |
| October. | 10.5 | 3.6 | 9.2 | 9.6 | 6.4 | 9.9 | 9.2 | 10.2 | 7.8 | 2.4 | 3.8 | 2.3 | 4.4 | 4.8 | 6.4 | 5.6 | 7.5 |
| November. | 9.5 | 8.0 | 7.4 | 0 | 0 | 0 | 0 | 1.4 | 0 | 8.0 | 3.3 | 2.0 | 1.9 | 4.7 | 0 | 0 | 1.6 |
| December. | 0 | 1.8 | 3.9 | 0 | 0 | 0 | 2.9 | 0 | 5.9 | 2.3 | 6.9 | 0 | 0 | 7.5 | 0 | 2.4 | 0 |

TOTAL AMOUNT OF SUNSHINE RECORDED ON EACH DAY—1923. (Continued).

| Month. | 18 | 19 | 20 | 21 | 22 | 23 | 24 | 25 | 26 | 27 | 28 | 29 | 30 | 31 | Monthly Total | Monthly Percentage. |
|------------|------|------|------|------|------|------|------|------|------|------|------|------|------|------|---------------|---------------------|
| January. | T | 1.0 | 0 | 3.1 | 6.7 | 3.0 | 0 | 8.1 | 0 | 0 | 0 | 6.2 | 6.5 | 0 | 54.9 | 19 |
| February. | 4.8 | 5.3 | 0.4 | 0.2 | 6.1 | 9.2 | 0 | 6.0 | 1.0 | 6.0 | 2.6 | | | | 96.0 | 33 |
| March. | 7.1 | 7.3 | 2.5 | 4.5 | 0.1 | 0.7 | 7.6 | T | 8.1 | 5.0 | 3.7 | 2.0 | 8.9 | 11.2 | 152.5 | 41 |
| April. | 6.9 | 8.7 | 10.9 | 9.4 | 1.1 | 12.4 | 13.2 | 13.3 | 12.3 | 6.2 | 0.5 | 4.9 | 1.5 | | 183.1 | 46 |
| May. | 13.8 | 13.8 | 0.4 | 4.1 | 13.0 | 14.1 | 13.2 | 13.6 | 13.5 | 13.5 | 12.0 | 14.1 | 13.4 | 11.8 | 285.7 | 63 |
| June. | 13.3 | 7.1 | 11.8 | 7.9 | 11.1 | 10.0 | 11.8 | 11.1 | 9.9 | 10.2 | 0 | 12.9 | 13.2 | | 277.8 | 60 |
| July. | 13.8 | 13.9 | 12.2 | 12.0 | 12.0 | 9.7 | 0 | 9.9 | 10.8 | 0 | 6.0 | 2.5 | 10.6 | 8.9 | 284.3 | 61 |
| August. | 7.0 | 12.5 | 11.6 | 0 | 12.0 | 6.6 | 6.8 | 4.7 | 11.7 | 7.9 | 2.1 | 7.8 | 9.5 | 9.9 | 284.3 | 66 |
| September. | 0.8 | 8.9 | 0 | T | 10.3 | 6.9 | 10.5 | 7.5 | 5.2 | 8.6 | 1.9 | 9.7 | 1.9 | | 192.0 | 51 |
| October. | 9.1 | 0.9 | 7.5 | 0 | 9.4 | 3.1 | 0 | 0 | 6.8 | 6.7 | 5.7 | 6.5 | 2.6 | 1.1 | 173.0 | 50 |
| November. | 3.9 | 2.8 | 4.3 | 0.9 | 7.2 | 0 | 5.3 | 7.7 | 0 | 0 | 0 | 2.0 | 0 | | 81.9 | 28 |
| December. | 0 | 5.7 | 0 | 0 | 1.2 | 0 | 7.5 | 0 | 2.3 | 0 | 1.3 | 0 | 0 | 0 | 51.6 | 19 |

MONTHLY TABLES FOR EACH HOUR OF RECORDED SUNSHINE—1923

| HOURS ENDING. Local time | 4 | 5 | 6 | 7 | 8 | 9 | 10 | 11 | 12 | 13 | 14 | 15 | 16 | 17 | 18 | 19 | 20 |
|-----------------------------|---|---|------|------|------|------|------|------|------|------|------|------|------|------|------|------|-----|
| January. | 0 | 0 | 0 | 0 | 0 | 1.6 | 1.9 | 2.5 | 2.5 | 2.4 | 2.7 | 2.2 | 1.5 | 0.4 | 0 | 0 | 0 |
| February. | 0 | 0 | 0 | 0 | 0.1 | 2.1 | 3.0 | 4.0 | 4.4 | 4.6 | 4.6 | 5.0 | 4.1 | 2.3 | 0.1 | 0 | 0 |
| March. | 0 | 0 | 0 | 0.1 | 2.4 | 3.5 | 4.9 | 4.7 | 5.7 | 6.1 | 6.4 | 6.1 | 5.2 | 3.1 | 0.9 | 0 | 0 |
| April. | 0 | 0 | 0.6 | 3.1 | 5.0 | 5.0 | 5.6 | 5.7 | 5.9 | 5.6 | 5.8 | 4.8 | 4.6 | 4.4 | 3.5 | 1.6 | 0 |
| May. | 0 | 0 | 3.2 | 6.1 | 6.6 | 6.7 | 7.2 | 7.2 | 7.2 | 6.7 | 7.0 | 7.5 | 7.1 | 7.1 | 7.1 | 5.1 | 0.4 |
| June. | 0 | 0 | 2.3 | 6.7 | 7.6 | 7.7 | 7.4 | 7.5 | 8.2 | 8.2 | 7.4 | 6.5 | 6.5 | 6.5 | 4.9 | 4.3 | 0.9 |
| July. | 0 | 0 | 2.9 | 5.3 | 6.5 | 7.2 | 6.9 | 6.6 | 7.0 | 7.2 | 7.2 | 7.0 | 7.0 | 7.0 | 6.7 | 5.7 | 1.6 |
| August. | 0 | 0 | 1.4 | 4.9 | 6.0 | 7.0 | 7.6 | 8.0 | 8.1 | 7.6 | 8.0 | 7.8 | 7.6 | 7.5 | 6.3 | 3.7 | 0 |
| September. | 0 | 0 | 0 | 1.2 | 5.3 | 5.8 | 6.6 | 6.6 | 5.8 | 6.5 | 6.8 | 6.6 | 6.3 | 4.5 | 2.0 | 0.1 | 0 |
| October. | 0 | 0 | 0 | 0.3 | 2.6 | 5.1 | 5.4 | 6.1 | 6.7 | 7.3 | 7.0 | 6.7 | 5.6 | 2.9 | 0.1 | 0 | 0 |
| November. | 0 | 0 | 0 | 0 | 0.7 | 2.5 | 2.9 | 3.6 | 3.2 | 3.7 | 4.2 | 3.8 | 2.1 | 0.4 | 0 | 0 | 0 |
| December. | 0 | 0 | 0 | 0 | 0 | 0.1 | 1.5 | 2.3 | 2.7 | 2.4 | 2.3 | 2.6 | 2.0 | 0 | 0 | 0 | 0 |
| Total hours. | 0 | 0 | 10.4 | 27.7 | 42.8 | 54.3 | 60.9 | 64.8 | 67.4 | 68.3 | 69.4 | 66.6 | 59.6 | 46.1 | 31.6 | 20.5 | 2.9 |

SUMMARY OF SUNSHINE.

BRIGHT SUNSHINE RECORDED.

| | 1923 | | | Mean from 1882 to 1910. | | |
|-----------|-----------------|-----------------|-------------------------|-------------------------|------------------|-------------------------|
| | Number of days. | Number of hours | Percentage of sunshine. | Number of days. | Number of hours. | Percentage of sunshine. |
| January | 15 | 54.9 | 19 | 20 | 77.9 | 27 |
| February | 23 | 96.0 | 33 | 22 | 108.1 | 37 |
| March | 28 | 152.5 | 41 | 25 | 150.0 | 40 |
| April | 27 | 183.1 | 46 | 25 | 190.7 | 47 |
| May | 28 | 285.7 | 63 | 29 | 218.9 | 48 |
| June | 27 | 277.8 | 60 | 29 | 260.0 | 56 |
| July | 28 | 284.3 | 61 | 30 | 282.2 | 60 |
| August | 30 | 284.3 | 66 | 30 | 252.7 | 60 |
| September | 27 | 192.0 | 51 | 28 | 207.8 | 55 |
| October | 28 | 173.0 | 50 | 28 | 149.3 | 44 |
| November | 18 | 81.9 | 28 | 22 | 85.8 | 29 |
| December | 13 | 51.6 | 19 | 20 | 65.2 | 24 |
| Year | 292 | 2117.1 | 48 | 308 | 2048.1 | 46 |

Possible hours, 4,452.4.

| No | Date 1923 | P. T. Commence. | S. Commence. | L. W. Commence. | Max. | End | Max. Amplitude. | REMARKS |
|------|-----------|-----------------|--------------|-----------------|---------|---------|-----------------|----------------|
| 2475 | Mar 24 | | | 8 52.8 | | 9 10.6 | 0.05 | |
| 2476 | " 24 | e13 14.4 | | 13 24.3 | 13 43.2 | 15 38.3 | 2.8 | |
| | | | | 13 30.4 | | | | |
| | | | | 15 29.9 | | 15 36.7 | 0.05 | |
| 2477 | " 26 | | | 13 36.0 | | 13 42.8 | 0.1 | |
| 2478 | Apr 13 | | | 16 3.9 | 16 14.8 | 17 40.7 | 2.0 | P. indistinct. |
| 2479 | " 13 | | 15 52.7? | 16 8.1 | 16 16.8 | | | |
| | | | | 21 16.0 | | | | |
| 2480 | " 13 | | | 4 0.0 | 4 39.1 | 5 22.7 | 0.4 | |
| 2481 | " 19 | | | 4 22.5 | | | | |
| | | | | 4 15.5 | 4 19.7 | 5 27.6 | 0.3 | |
| 2482 | " 23 | | | 23 4.8 | | 23 16.1 | 0.1 | |
| 2483 | " 24 | | | 19 52.5 | 19 52.8 | 20 22.5 | 0.3 | |
| 2484 | " 25 | e19 50.8 | | 3 14.1 | | 3 18.9 | 0.1 | |
| 2485 | " 29 | | | 16 41.6 | | 17 14.0 | 0.1 | |
| 2486 | " 30 | | | 21 0.6 | | 21 18.6 | 0.1 | |
| 2487 | " 30 | | | | | | | |

Period of Boom 18 seconds. Pillar inclination 1 mm=0.46"

EARTHQUAKE RECORDS BY MILNE-SHAW SEISMOGRAPHS.

E & W Component.—Period, 12 seconds.—Magnification, 150.—Damping, 20 to 1.

| No. | Date 1923 | P.T. Commence. | S. Commence. | L.W. Commence. | Max. | End. | Max. Amplitude. | REMARKS. |
|------|-----------|----------------|--------------|----------------|---------|---------|-----------------|--|
| 2488 | May 2 | H. M. | H. M. | H. M. | H. M. | H. M. | μ | |
| 2489 | " 4 | | | 16 45.5 | 16 45.8 | | 79 | Milne, amp. 0.3mm. Early phases lost. |
| | | | | 16 51.2 | 16 57.2 | | 181 | |
| 2490 | " 4 | 22 38.5 | 22 47.3 | 23 0.7 | 22 48.2 | 0 49.7 | 11 | 7,390 km. |
| | | | | 23 0.6 | 23 0.6 | | 37 | |
| 2491 | " 8 | e19 20.2 | | 19 32.3 | | 20 17.5 | | Very small amp. |
| 2492 | " 10 | e 4 1.0 | | 4 10.0? | | 6 10.0 | | Small amp. N. & S. comp. |
| | | | | 4 45.6 | | | | |
| 2493 | " 11 | e 8 44.5 | | 9 8.0 | | 10 5.0? | | Minute slow waves. |
| 2494 | " 12 | i 1 39.6 | 1 52.9 | 2 2.3 | 2 46.2 | 3 38.6 | 21 | N. & S. comp. |
| 2495 | " 15 | 21 53.9 | 22 3.5? | 22 19.0 | | 23 35.6 | | Very small amp. |
| 2496 | " 23 | 22 48.5 | 22 57.3 | 23 5.1 | 23 14.8 | 2 22 8 | 48 | 7,460 km. |
| | | | | 23 13.3 | | | | |
| 2497 | " 25 | | | 22 43.6? | | | | No cut off, times doubtful. |
| | | | | 22 45.7 | | | | |
| 2498 | " 26 | | | 3 45.6 | | | | Milne, amp. 0.1 mm. |
| | | | | 4 9.7 | | | | |
| 2499 | " 26 | | | 9 36.2 | | 10 7.9 | | Milne, amp. 0.05 mm. |
| | | | | 10 1.2 | | | | |
| 2500 | " 28 | | | 2 36.8 | 3 11.3 | 4 2.0 | | Milne, amp. 0.3 mm. |
| 2501 | " 30 | 8 48.6? | 8 58.1? | 9 0.4 | | Micros | 8 | |
| 2502 | " 30 | e18 14.9 | | 18 31.2 | 18 32.9 | Micros | 20 | N. & S. comp |
| 2503 | " 31 | | | 6 49.0 | | 7 11.2 | | N. & S. comp. |
| 2504 | " 31 | 22 12.6 | 22 18.0 | 22 21.7 | | 23 16.0 | | |
| 2505 | June 1 | | 17 48.4 | 18 10.0 | 18 20.6 | | 10 | |
| | | | | 18 10.0 | 18 22.5 | | 87 | |

EARTHQUAKE RECORDS BY MILNE SEISMOGRAPH.

P.T.—Preliminary Tremors. S.—Secondary Waves. L.W.—Large Waves. Time is Greenwich Civil Mean Time, and is given in hours, minutes, and decimals of minutes; 0 or 24h—Mid.

REGISTER FROM TORONTO, ONTARIO.

| No. | Date 1923. | P.T. | | S | | L.W. | | Max. | | End. | | Max Amplitude. MM. | REMARKS. |
|------|---------------|----------|-------|----------|------|-----------|------|------|-------|--------|------|--------------------------|---|
| | | Commence | | Commence | | Commence. | | H. | M. | H. | M. | | |
| | | H. | M. | H. | M. | H. | M. | H. | M. | H. | M. | | |
| 2437 | Jan. 2 | | | | | 23 | 13.9 | 23 | 17.8 | 23 | 47.7 | 0.4 | 4,120 km. Northern California. |
| 2438 | " 22 | 9 | 11.7 | 9 | 17.6 | 23 | 15.9 | 9 | 27.7 | 11 | 18.8 | 10.0 | |
| 2439 | " 27 | | | | | 9 | 23.3 | | | | | 0.4 | Distant quake |
| 2440 | " 27 | | | | | 8 | 14.7 | 8 | 14.9 | 8 | 17.2 | 0.2 | |
| 2441 | Feb 1 | | | | | 8 | 34.2 | 20 | 34.9 | 21 | 14.6 | 0.5 | |
| 2442 | " 2 | | | | | 20 | 26.6 | | | | | 1.3 | |
| 2443 | " 2 | 5 | 19.6 | 5 | 28.4 | 1 | 35.9 | 1 | 53.2 | 3 | 11.4 | 6.7 | e 1 28.3; 7,380 km. Amp. of S.=0.4 mm. |
| 2444 | " 3 | 16 | 13.3 | 16 | 22.1 | 5 | 47.2 | 5 | 50.2 | 8 | 25.0 | over 30.0 | P. amp. 1.0 mm. Lat. 90° 56" w. S. amp. 4.0 mm. Long. 142° w. Thickening. |
| 2445 | " 4 | | | | | 2 | 50.6 | | | 3 | 3.4 | 0.05 | Thickening. |
| 2446 | " 4 | | | | | 13 | 13.1 | | | 13 | 23.2 | 0.05 | |
| 2447 | " 5 | | | | | 12 | 21.1 | | | 12 | 31.3 | 0.1 | Thickening. |
| 2448 | " 5 | | | | | 23 | 35.7 | 23 | 39.2 | 0 | 6.4 | 0.3 | |
| 2449 | " 8 | e 0 | 53.0 | | | 23 | 37.1 | | | | | 0.2 | Doubtful as to being seismic. |
| 2450 | " 8 | | | | | 0 | 57.2 | 0 | 58.5 | 1 | 18.6 | 0.2 | |
| 2451 | " 11 | | | | | 8 | 30.8 | 8 | 38.2 | 8 | 48.5 | 0.2 | Doubtful as to being seismic. |
| 2452 | " 11 | | | | | 8 | 32.4 | | | | | 0.2 | |
| 2453 | " 19 | | | | | 17 | 52.9 | 17 | 55.2 | 18 | 7.4 | 0.2 | May be return waves of No. 2453 |
| | | | | | | 23 | 22.9 | 23 | 25.5 | 0 | 39.4 | 0.4 | |
| 2455 | Feb 14 | | | | | 23 | 23.9 | | | | | 1.3 | Thickening. |
| 2456 | " 19 | | | | | 2 | 35.2 | 2 | 39.0 | 3 | 3.3 | 0.1 | |
| 2457 | " 21 | | | | | 2 | 38.7 | | | | | 0.1 | Thickening. |
| 2458 | " 23 | | | | | 0 | 17.6 | 0 | 20.5 | 0 | 43.2 | 0.4 | |
| 2459 | " 24 | pr 7 | 53.9 | 7 | 56.1 | 1 | 33.2 | 1 | 36.3 | 1 | 46.9 | 0.2 | Amp. at 7 56.1 was 1.0mm. |
| 2460 | " 27 | | | 7 | 57.4 | 7 | 10.0 | | | 7 | 34.2 | 0.1 | |
| 2461 | Mar 1 | i 8 | 48.5? | | | 7 | 22.7 | | | | | 0.1 | P. & S. not recorded, |
| 2462 | " 2 | | | | | 8 | 0.3 | 8 | 15.4 | 11 | 16.7 | 10.0 | |
| 2463 | " 3 | | | | | 8 | 3.5 | | | | | 0.05 | Max, possibly after 18h. 18m. |
| 2464 | " 4 | | | | | 20 | 50.8 | | | 21 | 5.0 | 0.05 | |
| 2465 | " 11 | | | | | 8 | 56.7 | 9 | 3.3 | 10 | 10.5 | 0.6 | P. & S. not recorded, |
| 2466 | " 12 | | | | | 9 | 1.3 | | | | | 0.8 | |
| 2467 | " 12 | | | | | 17 | 10.2 | 17 | 11.2? | 19 | 28.8 | 0.8 | Max, possibly after 18h. 18m. |
| 2468 | " 12 | | | | | 17 | 41.6 | | | | | 0.05 | |
| 2469 | " 13 | | | | | 22 | 36.7 | | | | | 0.05 | P. & S. not recorded. |
| 2470 | " 14 | | | | | 23 | 20.0 | | | | | 0.3? | |
| 2471 | " 15 | | | | | 7 | 52.5 | 8 | 17.1 | 10 | 2.0 | 0.2 | Gradually increasing vibrations. |
| 2472 | " 16 | | | | | 8 | 10.0 | | | | | 0.2 | |
| 2473 | " 18 | | | | | 23 | 26.6 | 23 | 29.8 | 0 | 1.0 | 0.2 | P. & S. indistinct. |
| 2474 | " 19 | | | | | 23 | 28.7 | | | | | 0.1 | |
| | | | | | | 9 | 59.7 | | | 10 | 2.7 | 0.1 | P. & S. indistinct. |
| | | | | | | 10 | 19.0 | | | 11 | 13.7 | 0.05 | |
| | | | | | | 10 | 51.5 | | | | | 0.2 | P. & S. indistinct. |
| | | | | | | 12 | 6.8 | 12 | 35.5 | 13 | 26.3 | 0.2 | |
| | | | | | | 12 | 20.6 | | | | | 0.05 | P. & S. indistinct. |
| | | | | | | 20 | 28.0 | | | 21 | 0.0? | 0.05 | |
| | | | | | | 21 | 56.5 | 22 | 21.1? | 22 | 29.7 | 0.3? | P. & S. indistinct. |
| | | | | | | 22 | 7.0 | | | | | 0.8 | |
| | | | | | | 6 | 17.7 | 6 | 24.6 | 7 | 1.0 | 0.5 | P. & S. indistinct. |
| | | | | | | 6 | 20.0 | | | | | 0.8 | |
| | | | | | | 23 | 1.1 | 23 | 26.2 | 0 | 37.8 | 0.8 | P. & S. indistinct. |
| | | | | | | 23 | 9.7 | | | | | 0.05 | |
| | | | | | | 20 | 44.2 | | | 20 | 59.0 | 0.05 | P. & S. indistinct. |
| | | | | | | 11 | 31.4 | 11 | 35.6 | Micros | | 0.8 | |
| | | | | | | 11 | 34.8 | | | | | 0.8 | |

33

34

| No | Date 1923 | P. T. Commence. | S. Commence. | L. W. Commence. | Max. | End | Max. Amplitude. | REMARKS | |
|------|-----------|-----------------|--------------|-----------------|---------|---------|-----------------|----------------|-----|
| 2475 | Mar 24 | e13 14.4 | 15 52.7? | 8 52.8 | 13 43.2 | 9 10.6 | 0.05 | P. indistinct. | |
| 2476 | " 24 | | | 13 24.3 | | 15 38.3 | 2.8 | | |
| | | | | 13 30.4 | | 15 36.7 | 0.05 | | |
| 2477 | " 26 | | | 15 29.9 | | 13 42.8 | 0.1 | | |
| 2478 | Apr 13 | | | 13 36.0 | | 17 40.7 | 2.0 | | |
| 2479 | " 13 | | | 16 3.9 | | 16 16.8 | 0.05 | | |
| | | | | 16 8.1 | | | 0.4 | | |
| 2480 | " 13 | | | 21 16.0 | | 5 22.7 | | | |
| 2481 | " 19 | | | 4 0.0 | | 4 39.1 | 5 27.6 | | 0.3 |
| | | | | 4 22.5 | | 4 10.7 | 5 27.6 | | 0.1 |
| 2482 | " 23 | e19 50.8 | | 4 15.5 | 19 52.8 | 23 16.1 | 0.3 | | |
| 2483 | " 24 | | | 23 4.8 | | 20 22.5 | 0.1 | | |
| 2484 | " 25 | | | 19 52.5 | | 3 18.9 | 0.1 | | |
| 2485 | " 29 | | | 3 14.1 | | 17 14.0 | 0.1 | | |
| 2486 | " 30 | | | 16 41.6 | | 21 18.6 | 0.1 | | |
| 2487 | " 30 | | | 21 0.6 | | | | | |

Period of Boom 18 seconds. Pillar inclination 1 mm = 0.46'

EARTHQUAKE RECORDS BY MILNE-SHAW SEISMOGRAPHS.
E & W Component.—Period, 12 seconds.—Magnification, 150.—Damping, 20 to 1.

| No. | Date 1923 | P.T. | | S. | | L.W. | | Max. | End. | Max. Amplitude. | REMARKS. | |
|------|-----------|-------|-------|-------|-------|-------|-------|------|------|-----------------|--|---|
| | | H. M. | H. M. | H. M. | H. M. | H. M. | H. M. | | | | | |
| 2488 | May 2 | | | 16 | 45.5 | 16 | 45.8 | | | μ | Milne, amp. 0.3mm. Early phases lost. | |
| 2489 | " 4 | | | | | 16 | 51.2 | | | 79 | | |
| 2490 | " 4 | 22 | 38.5 | 22 | 47.3 | 23 | 0.7 | 22 | 48.2 | 0 49.7 | 181 | 7,390 km. |
| | | | | | | | | 23 | 0.6 | 11 | | |
| 2491 | " 8 | e19 | 20.2 | | | 19 | 32.3 | | | 20 17.5 | 37 | Very small amp. Small amp. N. & S. comp. |
| 2492 | " 10 | e4 | 1.0 | | | 4 | 10.0? | | | 6 10.0 | | |
| 2493 | " 11 | e8 | 44.5 | | | 9 | 8.0 | | | 10 5.0? | | Minute slow waves. N. & S. comp. |
| 2494 | " 12 | i1 | 39.6 | 1 | 52.9 | 2 | 2.3 | 2 | 46.2 | 3 38.6 | 21 | |
| 2495 | " 15 | 21 | 53.9 | 22 | 3.5? | 22 | 19.0 | | | 23 35.6 | | Very small amp. 7,460 km. |
| 2496 | " 23 | 22 | 48.5 | 22 | 57.3 | 23 | 5.1 | 23 | 14.8 | 2 22.8 | 48 | |
| 2497 | " 25 | | | | | 23 | 13.3 | | | | | No cut off, times doubtful. |
| | | | | | | 22 | 43.6? | | | | | |
| 2498 | " 26 | | | | | 22 | 45.7 | | | | | Milne, amp. 0.1 mm. |
| | | | | | | 3 | 45.6 | | | | | |
| 2499 | " 26 | | | | | 4 | 9.7 | | | | | Milne, amp. 0.05 mm. |
| | | | | | | 9 | 36.2 | | | 10 7.9 | | |
| 2500 | " 28 | | | | | 10 | 1.2 | | | | | Milne, amp. 0.3 mm. |
| | | | | | | 2 | 36.8 | 3 | 11.3 | 4 2.0 | | |
| 2501 | " 30 | 8 | 48.6? | 8 | 58.1? | 9 | 0.4 | | | Micros | 8 | N. & S. comp |
| 2502 | " 30 | e18 | 14.9 | | | 18 | 31.2 | 18 | 32.9 | Micros | 20 | |
| 2503 | " 31 | | | | | 6 | 49.0 | | | 7 11.2 | | N. & S. comp. |
| 2504 | " 31 | 22 | 12.6 | 22 | 18.0 | 22 | 21.7 | | | 23 16.0 | 10 | |
| 2505 | June 1 | | | 17 | 48.4 | 18 | 10.0 | 18 | 20.6 | | 87 | |
| | | | | | | | | 18 | 22.5 | | | |

| No | Date 1923 | P. T. Commence. | S. Commence. | L. W. Commence. | Max. | End | Max. Amplitude. | REMARKS |
|------|-----------|-----------------|--------------|-----------------|---------|-----------|-----------------|-------------------------------|
| 2506 | June 1 | | 20 39.5 | 20 46.2 | 21 12.6 | | 14 | Small amp. |
| 2507 | " 2 | | 1 26.4 | 1 33.2 | | | | Doubtful as to being seismic. |
| 2508 | " 2 | | | 13 38.7? | | | | |
| | | | | 13 46.5 | | 0 31.2 | | |
| 2509 | " 2 | | | 23 49.2 | | | | Micros going on. |
| 2510 | " 3 | | | 12 34.7 | | | | |
| 2511 | " 4 | | | 21 23.1 | | | | |
| | | | | 21 32.9 | | | | |
| 2512 | " 5 | | | 6 38.1 | | | | Micros |
| 2513 | " 6 | | | 18 35.2 | | | | Micros |
| | | | | 18 57.0 | | | | |
| 2514 | " 6 | | e23 10.6 | 23 15.2 | | 23 55.1 | | Very small. |
| 2515 | " 10 | | | 1 48.2 | | 2 1.0? | | Slow waves. |
| 2516 | " 10 | | | 19 10.4 | | 21 11.4 | | |
| 2517 | " 11 | | | 11 35.1 | | | | |
| | | | | 11 38.5 | | | | |
| 2518 | " 18 | 8 34.7 | 8 40.6 | 8 50.0 | 9 17.4 | 11 6.0 | 27? | May not be seismic. |
| | | 8 35.1? | | | | | | |
| 2519 | " 18 | | | 21 26.1? | | | | |
| | | | | 21 29.0 | | | | |
| 2520 | " 19 | 22 51.8 | 22 58.4 | 23 5.4? | 23 11.2 | 0 4.0? | 36 | N. & S. component. 4,820 km. |
| 2521 | " 22 | e4 2.2 | | 4 5.2 | | 4 28.0 | | Small amp. |
| 2522 | " 22 | e7 4.5? | 7 11.7 | 7 20.0 | 7 51.4 | 9 52.0 | 62 | 5,520 km |
| 2523 | " 22 | | | 21 44.6 | | 23 16.0 | | Small amp. |
| 2524 | " 25 | | | 22 54.4 | | 23 22.0? | | Small micros going on. |
| 2525 | " 30 | i 0 29.7 | | 0 32.2 | | 0 47.0? | | |
| 2526 | July 1 | e7 49.1 | | 8 54.2 | | 9 24.0 | | Small. |
| 2527 | " 2 | | | 2 51.0 | | 4 46.2 | | |
| | | | | 3 24.2 | | | | |
| 2528 | " 2 | | | 16 56.9 | | | | Slow waves. |
| | | | | 17 18.0 | | | | |
| 2529 | July 4 | e5 44.0 | | 5 47.1 | | 6 6.0 | | Small amp. |
| 2530 | " 4 | e8 29.4 | | 8 39.0 | | 9 56.0 | | |
| 2531 | " 4 | | | i17 8.9 | | ? | | |
| 2532 | " 4 | | | 23 51.0 | | 0 25.5 | | |
| 2533 | " 5 | | | 16 6.0 | | | | Doubtful. |
| | | | | 16 26.0 | | | | |
| 2534 | " 6 | | | 6 4.9 | | 6 16.0 | | Slow waves. |
| 2535 | " 7 | e6 25.6 | | 6 38.5 | | 7 5.0 | | Small amp. |
| 2536 | " 7 | e13 38.2 | | Slow waves to | | 13h. 48m. | | when paper was taken off. |
| 2537 | " 10 | e0 30.7 | | | | 0 36.4 | | Slow waves. |
| 2538 | " 10 | | 0 50.1 | 1 2.7 | | 3 6.2 | | Small amp. |
| 2539 | " 10 | e5 48.7 | | | | 5 48.8 | | Very small, doubtful. |
| 2540 | " 12 | e3 34.4 | 3 43.7 | 3 54.4 | | 6 12.0 | 23 | |
| 2541 | " 12 | i9 42.0 | | 10 6.9 | | 11 14.0? | | |
| 2542 | " 13 | i1 27.6? | 11 38.0 | 11 58.0 | 12 9.7 | 1 56.0? | 45 | Small amp. |
| 2543 | " 14 | e23 3.5 | | 0 44.7 | | | | 9,340 km. |
| | | | | 1 12.0 | | | | Slow waves. |
| 2544 | " 15 | e3 58.6 | | | | 4 0.0 | | Undulatory. |
| 2545 | " 16 | e13 58.4 | 14 8.0? | 14 14.9 | | 16 28.0 | 20 | |
| 2546 | " 17 | i1 16.7 | | 1 23.1 | | 2 8.0 | | Irregular, small amp. |
| 2547 | " 18 | i1 13.1 | 1 18.9 | 1 22.3 | | 2 2.0 | | 3,980 km. |
| 2548 | " 18 | 6 9.4 | 6 15.1 | 6 20.0 | | 7 4.0 | | 3,980 km, small amp. |
| 2549 | " 20 | i5 7.6 | | 5 17.4 | | 5 46.0 | | Small. |
| 2550 | " 20 | | | 15 24.0 | | | | Small amp. |
| 2551 | " 21 | | | 7 2.5 | | 7 36.0 | | Slow waves. |
| 2552 | " 21 | | | 8 1.5 | | 8 38.0 | | May not be seismic. |
| 2553 | " 22 | 14 28.8 | 14 37.6 | 14 48.8 | 14 59.3 | 18 18.0? | 40 | 7,360 km. |
| 2554 | " 23 | e7 40.1 | 7 41.8 | 7 47.2 | 7 49.6 | 9 30.0 | 40 | |
| | | 7 40.8 | | 7 56.9 | | | | |
| 2555 | " 25 | e2 4.4 | | e2 16.0 | | 2 44.8 | | May not be seismic. |
| 2556 | " 26 | e3 20.0 | | 3 26.4 | | 3 58.0 | | Small amp. |
| | | | | 3 38.0 | | | | |

| No | Date 1923 | P. T. Commence. | S. Commence. | L. W. Commence. | Max. | End | Max. Amplitude. | REMARKS |
|------|-----------|-----------------|--------------|--------------------|---------|--------------------|-----------------|--|
| 2557 | July 26 | e10 10.5 | | 10 52.2 | | 11 58.0? | | Undulatory. May not be seismic. Small amp. Uniform L. when paper was put on at 15h. 44m. Undulatory. |
| 2558 | " 27 | e 2 12.0 | | 11 7.0 2 14.8 | | 3 42.0 | | |
| 2559 | " 28 | | | e18 36.5 | | | | |
| 2560 | " 31 | i 5 51.4? | | 6 1.3? | | 6 24.0 | | |
| | | 5 53.6 | | | | | | |
| 2561 | " 31 | | | 16 3.6 16 4.0 | | | | |
| 2562 | Aug. 1 | | | 5 24.4 6 29.0 | | | | |
| 2563 | " 1 | i 8 37.8 | | 8 54.0 | | 9 10.0 | | |
| 2564 | " 2 | | | 9 45.1 9 47.1 | | 9 54.0 | | |
| 2565 | " 4 | | | 17 13.0 17 44.0 | | | | |
| 2566 | " 8 | | | 9 4.0 9 18.0 | | | | |
| 2567 | " 8 | | | 12 3.0 | | | | |
| 2568 | " 8 | 12 8.3 | 12 13.9 | 12 15.8 | 12 21.5 | 13 48.0 | 8 | Undulatory. 3,720 km. |
| 2569 | " 10 | | | 3 2.4 3 16.1 | | 5 21.0? | | Undulatory. |
| 2570 | " 10 | | | 10 46.5 | | Micros 23 48.0? | | Heavy micros. |
| 2571 | " 10 | | | 23 12.8 | | | | Micros. Slow waves. |
| 2572 | " 11 | e 1 26.4 | | 1 52.2 | | 3 12.0 | | |
| 2573 | " 12 | e 7 7.2 | | | | 7 24.0 | | |
| 2574 | " 12 | e10 46.1 | | 11 7.6 | | 12 1.0 | | Slow waves. |
| 2575 | " 12 | | | e17 43.8 | | 17 58.0 | | (N. & S. Component.) |
| 2576 | " 16 | i20 44.7 | | 21 3.1 | | Micros 2 20.0? | | |
| 2577 | " 17 | e 1 24.3 | | 1 44.9 | | 4 53.0 | | Indefinite. |
| 2580 | Aug. 17 | | | 13 12.0 | | | | Changing papers at F. |
| 2581 | " 18 | | | 13 17.4 | | | | |
| 2582 | " 19 | | | 22 0.0 | | 23 8.8 | | |
| 2583 | " 20 | | | 13 18.5 | | | 7 | May not be seismic. |
| 2584 | " 23 | 5 29.3 | 5 35.7 | 5 42.7 | | 19 27.0 | | Early phases masked, local cause |
| 2585 | " 28 | 23 21.5 | 23 26.4 | 23 30.4 | 23 31.8 | 6 44.0 | 5 | N. & S. component. |
| | | | 23 26.5 | | 23 32.0 | 2 53.0 | 232 | S. indefinete. |
| 2586 | " 30 | | | 14 57.6 | | | | 3,140 km. Large vibs, 0.23h 15m |
| 2587 | " 31 | i11 42.7 | | 12 28.1 | | 15 44.0 | | 20s. |
| 2588 | Sep. 1 | 3 11.8 | 3 22.6 | 3 36.3 | 3 56.3 | 12 54.0 | | Uniform waves, small amp. |
| 2589 | " 2 | e 3 0.0 | 3 10.5 | 3 30.6 | | 10 10.0 | 800 | Destructive Japanese; 9,760 km. |
| 2590 | " 2 | e 9 40.1? | 9 50.5 | 10 9.2 | 3 46.1 | 7 10.0 | 405 | 0.2h. 58m. 58s. |
| | | 9 44.1 | | | | 12 10.0 | 13 | Marked disturbance. |
| 2591 | " 2 | 22 48.1 | 22 56.1 | 22 57.7 | | 1 2.0 | 56 | P. indefinitely marked, 6,490km. |
| 2592 | " 9 | e 4 37.5? | 4 34.7 | 4 40.0 | | 5 0.0 | | |
| 2593 | " 9 | i22 30.7 | | 22 36.5 | 23 5.1 | 0 58.0 | 71 | L. not well defined. Small amp. |
| 2594 | " 10 | e 9 55.5 | | 10 0.2 | | 10 17.0 | | P. & S. masked by micros. |
| 2595 | " 11 | | | 9 28.2 | | 9 40.0 | | Small amp. |
| 2596 | " 12 | 6 9.5? | 6 20.2? | 6 44.2? | | 7 30.0 | | Very small. |
| | | | | 6 50.6 | | | | Small amp. |
| 2597 | " 16 | | | 17 40.2 | 17 46.3 | | | |
| 2598 | " 17 | | | | 17 46.7 | | 17 | P. & S. lost changing papers. |
| 2599 | " 17 | | | i 4 3.2 | | 4 16.0 | | |
| 2600 | " 20 | | e 7 40.9 | 7 50.9 | 8 0.2 | Micros | 14 | N & S. component. |
| | | | | e 9 33.1 | | Micros | | Micros masked P. |
| 2601 | " 21 | e20 24.6? | | 9 34.7 | | | | Small. |
| | | | | 20 54.4 | | Micros | | N. & S. component. |

| No | Date 1923 | P. T. Commence. | S. Commence. | L. W. Commence | Max. | End | Max. Amplitude. | REMARKS |
|------|-----------|-----------------|--------------|----------------|---------|----------|-----------------|--|
| 2602 | Sept 22 | e12 45.5? | | 12 56.2? | | 13 20.0 | | L. waves not pronounced but quick period. |
| 2603 | " 22 | 21 5.2 | 21 12.4 | 21 26.6 | 21 44.4 | 23 44.0 | 27 | Small amp. |
| 2604 | " 23 | e4 3.1 | | 4 4.9 | | 4 24.0 | | |
| 2605 | " 23 | e17 44.0? | | 17 52.3 | | 18 53.0 | 7 | Small amp. |
| 2606 | " 26 | i2 48.1? | | 3 0.4 | | 3 28.0 | | |
| 2607 | " 26 | | 8 47.5 | 8 54.8 | 9 20.4 | | 19 | Japan. 11,950 km, small amp. |
| 2608 | " 27 | 7 26.3? | 7 38.7 | 8 19.0 | | | 18 | |
| 2609 | " 28 | e21 12.9 | | 21 21.0 | 21 21.3 | | 683 | |
| 2610 | " 30 | i1 27.3? | 1 31.7? | 1 33.6 | 1 40.6 | | 15 | Preceded by micros. |
| 2611 | Oct 1 | i8 55.5? | | 9 3.6 | | | | |
| 2612 | " 1 | e22 53.3 | | 23 18.4 | | | 6 | |
| 2613 | " 5 | | | 1 35.5 | | | 108 | S. difficult to interpret; 11,410km |
| 2614 | " 7 | 3 51.0 | 4 2.9 | 4 27.6 | 4 38.8 | | | |
| 2615 | " 7 | | 4 3.2 | e7 27.0 | | | | May not be seismic. |
| 2616 | " 8 | 3 49.8 | e3 55.2 | 7 40.0 | | 4 23.0 | 6 | N. & S. component. |
| 2617 | " 10 | 7 19.3 | 7 25.8 | 3 58.3 | | | | |
| 2618 | " 10 | | | 4 3.8 | 7 34.3 | 9 28.0 | 58 | Well defined 4,760 km. Undulatory. |
| 2619 | " 11 | e12 57.1 | | 7 32.6 | | 22 27.7 | | Not definite. |
| 2620 | " 13 | i4 32.7? | e4 43.5 | 23 1.6 | 4 48.0 | 13 41.0? | 8 | P. & S. masked by micros. |
| 2621 | " 15 | 8 1.7? | e8 7.1? | 4 46.2 | | 5 31.0 | 6 | No defined phases. |
| 2622 | " 15 | | 8 13.7 | 8 28.0 | | 10 22.0 | | Small amp. |
| 2625 | Oct. 19 | | | 20 45.0? | | 21 2.0 | | |
| 2626 | " 20 | | | 23 2.1 | | | | N. & S. component. |
| 2627 | " 21 | i19 16.8 | | 13 32.6 | | | | N & S. component. |
| 2628 | " 26 | | | 13 43.7 | | | | |
| 2629 | Nov. 1 | e20 10.7 | | 19 20.9 | | 19 27.0 | | |
| 2630 | " 2 | 21 27.7? | 21 38.5 | e19 40.2 | 20 16.1 | 19 50.0 | 16 | N & S. component; small |
| 2631 | " 3 | | | 20 14.7 | 22 19.1 | 21 2.0 | 84 | Micros. 9,800 km. |
| 2632 | " 3 | | | 22 2.5 | | 1 30.0 | | Small amp. |
| 2633 | " 3 | | | 3 29.4 | | | | |
| 2634 | " 3 | e5 44.5 | | 3 38.2 | | 5 34.0 | | Small slow waves. |
| 2635 | " 3 | 5 48.1 | | 5 16.5 | | | | |
| 2636 | " 4 | 8 43.1 | 8 47.7 | 6 7.6 | | 6 36.0 | 9 | |
| 2637 | " 4 | 0 23.9 | 0 34.8 | 8 50.1 | 8 56.0 | 10 52.0? | 24 | Larger amp. at P. 2,890 km. |
| 2638 | " 4 | | | 16 38.7 | 17 19.6 | | 27 | |
| 2639 | " 5 | e20 32.6 | | 0 54.9 | 1 5.4 | Micros | 281 | 9,830 km. |
| 2640 | " 5 | e2 22.2 | | 1 5.9 | | | | |
| 2641 | " 5 | e14 36.5 | | 12 54.9 | | Micros | | Small amp. |
| 2642 | " 6 | e17 37.8 | | 21 0.5 | | 23 59.0 | 12 | Micros going on. |
| 2643 | " 6 | | | e2 24.6 | | 2 34.0? | | |
| 2644 | " 8 | | | 14 38.6 | | 14 52.0 | | |
| 2645 | " 9 | | | 22 11.5 | 22 19.7 | 1 2.0 | 94 | P. poorly defined, 9,780 km; 0.21h. 29m. 17s. |
| 2646 | " 10 | | | 17 49.6 | 22 20.1 | 19 24.0 | | Small amp. |
| 2647 | " 12 | e12 0.4? | 12 8.3 | 20 11.5 | | 21 10.0 | | Small amp. |
| | | | 12 8.5 | 20 19.1 | | | | |
| | | | 0 13.0 | 0 16.0 | 0 15.3 | | 17 | P. & F. masked by high winds. |
| | | | 3 32.1 | 3 40.6 | 3 42.5 | 4 50.0 | 9 | P. masked by micros. |
| | | | e3 14.2 | | | | | May not be seismic. |
| | | | 12 21.4 | 12 27.0 | 13 14.0 | | 6 | |

| No | Date 1923 | P. T. Commence. | S. Commence. | L. W. Commence | Max. | End | Max. Amplitude. | REMARKS |
|------|--------------|--------------------|-----------------|-------------------|---------|---------|--------------------|--------------------------------|
| 2648 | Nov. 16 | | 4 28.5 | 4 32.5 | 4 34.8 | 5 30.0 | 50 | Micros masked P. |
| 2649 | " 16 | | | 7 26.5 | | 7 40.0 | 5 | Micros going on. |
| 2650 | " 17 | 3 3.6 | 3 11.9 | 3 22.6 | 3 30.2 | 5 16.0 | 14 | |
| 2651 | " 18 | | | 22 6.5 | | Micros | 13 | Micros mask early phase. |
| 2652 | " 19 | | | 9 12.2 | | Micros | | Strong micros prevailing. |
| | | | | 9 18.8 | | | | |
| 2653 | " 23 | | | 3 27.4 | | 3 40.0 | | |
| 2654 | " 25 | | | 17 44.8 | | 18 53.0 | | Small amp. |
| 2655 | " 26 | e13 28.4 | | 13 35.1 | | 14 40.0 | | Micros going on. |
| 2656 | " 26 | e16 28.8 | | 16 31.9 | | Micros | | Small amp. |
| 2657 | " 28 | | | 0 42.2 | | Micros | | Small amp. |
| | | | | 0 49.2 | | | | |
| 2658 | Dec. 2 | e15 36.2 | | 15 57.9 | | Micros | | |
| 2659 | " 3 | | | 8 57.2 | | Micros | | |
| | | | | 9 0.4 | | | | |
| 2660 | " 5 | e 7 59.2 | | 8 2.8 | | Micros | | N. & S. component, small. |
| 2661 | " 5 | | | 21 22.0 | | | 9 | Japan. |
| | | | | 21 31.0 | | | | P. S. & F. lost, wind effects. |
| 2662 | " 5 | e23 48.5 | | e23 57.0 | | 1 28.0? | | Irregular waves. |
| | | | | 1 11.7 | | | | N. & S. comp. Micros preceded. |
| 2663 | " 7 | | | e16 32.0 | | Micros | | Small amp. |
| | | | | 16 34.2 | | | | |
| 2664 | " 11 | | | 6 11.1 | | Micros | | Small. |
| | | | | 6 14.6 | | | | |
| 2665 | " 12 | | | 11 31.1 | | ? | | Micros mask F. |
| 2666 | " 13 | e17 9.9 | | 17 10.1 | | Micros | 7 | |
| 2667 | " 15 | | | 12 50.7? | | Micros | | Micros mask movements. |
| | | | | 12 51.9 | | | | |
| | | | | 7 58.0 | | Micros | | Irregular, small. |
| 2669 | Dec. 22 | 10 4.8? | 10 9.7 | 10 12.4 | 10 21.2 | 11 24.0 | 23 | 3,120 km. Colombia. |
| | | 10 5.4 | | | | | | |
| 2670 | " 22 | | | e18 13.2 | | 18 26.0 | | Very small. |
| | | | | 18 16.2 | | | | |
| 2671 | " 26 | e 3 9.6? | | 3 11.2 | | Micros | | |
| 2672 | " 27 | | | i15 3.1 | | | | Paper changed at 15h 20m. |
| | | | | 15 6.5 | | | | |
| 2673 | " 28 | e18 11.4 | | 18 15.6 | | Micros | | N. & S. component. |
| 2674 | " 28 | | | 23 14.8 | | | 9 | Wind and micros mask phases. |
| | | | | 23 17.0 | | | | |

43

44

MAGNETIC SUMMARY FOR 1923

Toronto (Agincourt) Observatory. Latitude 43° 47' N. Longitude 79° 16' W.
 Mean values are from hourly measures of the photographic D, H and Z curves. H and Z are given in
 C. G. S. units. I is obtained by formula $H \tan I = Z$.

| 1923 | MEANS. | | | | | | | EXTREMES. | | | | | | |
|-----------|---------|-------------|--------|-------------|--------|-------------|---------|-----------|--------|--------|--------|--------|--------|------|
| | D. West | | H. | | Z | | I | | D West | | H | | Z | |
| | Mean | Daily range | Mean | Daily range | Mean | Daily range | Mean | | Max. | Min. | Max. | Min. | Max. | Min. |
| January | 6 58.6 | 7.4 | .15799 | .00022 | .57899 | .00003 | 74 44.2 | 7 13.9 | 6 39.4 | .15828 | .15753 | .57915 | .57875 | |
| February | 6 59.3 | 6.8 | .15794 | 21 | .57895 | 07 | 44.4 | 7 18.9 | 6 10.8 | .15853 | .15695 | .57991 | .57836 | |
| March | 7 00.0 | 8.9 | .15790 | 30 | .57889 | 07 | 44.6 | 8 07.4 | 6 18.6 | .16048 | .15473 | .58061 | .57686 | |
| April | 7 00.3 | 11.7 | .15790 | 38 | .57870 | 07 | 44.3 | 7 20.9 | 6 41.7 | .15836 | .15735 | .57887 | .57801 | |
| May | 7 00.4 | 10.7 | .15791 | 31 | .57851 | 08 | 44.0 | 7 20.0 | 6 38.5 | .15844 | .15710 | .57880 | .57775 | |
| June | 7 00.2 | 11.9 | .15790 | 38 | .57858 | 13 | 44.1 | 7 25.1 | 6 10.1 | .15897 | .15709 | .57929 | .57728 | |
| July | 7 00.0 | 9.8 | .15788 | 31 | .57849 | 06 | 44.1 | 7 15.4 | 6 41.4 | .15841 | .15708 | .57875 | .57794 | |
| August | 7 01.9 | 10.6 | .15782 | 36 | .57827 | 08 | 44.0 | 7 15.2 | 6 49.2 | .15857 | .15732 | .57852 | .57781 | |
| September | 7 01.7 | 10.3 | .15777 | 31 | .57817 | 13 | 44.2 | 7 59.9 | 5 41.4 | .15845 | .15560 | .58016 | .57626 | |
| October | 7 02.2 | 6.2 | .15767 | 22 | .57818 | 13 | 44.8 | 7 38.9 | 5 57.5 | .15805 | .15606 | .57914 | .57707 | |
| November | 7 02.7 | 6.8 | .15768 | 17 | .57812 | 4 | 44.6 | 7 16.1 | 6 43.2 | .15789 | .15735 | .57823 | .57743 | |
| December | 7 03.4 | 4.4 | .15768 | 10 | .57798 | 03 | 44.4 | 7 18.3 | 6 52.4 | .15784 | .15734 | .57812 | .57780 | |

Phenological Observations, 1923

DATE WHEN FIRST SEEN.

| | | | |
|----------------------------|----------|------------------------|----------|
| Canada Thistle, flo'ering, | May 14 | Buttercup | June 14 |
| Dandelion, flowering, | May 14 | Robins arrive..... | April 3 |
| Violet, cultivated | April 23 | Meadow Larks | April 12 |
| Violet, White " | May 24 | Blue Birds..... | April 1 |
| Trees appear green | May 11 | Flickers | April 26 |
| Red Clover, flowering | June 22 | Swallows..... | May 1 |
| White Clover " | June 21 | Song Sparrows..... | April 2 |
| Wild Rose " | June 12 | King Birds..... | May 24 |
| Maple " | April 19 | Humming birds..... | May 30 |
| Crocus, cultiv'd " | April 23 | Rivers open..... | April 3 |
| Lilac " | May 28 | | |
| Apple, cultiv'ed " | May 26 | | |
| Plum, cultivated " | May 17 | | |
| Cherry, wild " | May 23 | | |
| Cherry, cultivated " | May 16 | | |